

The evolutionarily conserved TSC/Rheb pathway activates Notch in tuberous sclerosis complex and *Drosophila* external sensory organ development

Magdalena Karbowniczek, ... , Fabrice Roegiers, Elizabeth Petri Henske

J Clin Invest. 2010;120(1):93-102. <https://doi.org/10.1172/JCI40221>.

Research Article

Mutations in either of the genes encoding the tuberous sclerosis complex (TSC), *TSC1* and *TSC2*, result in a multisystem tumor disorder characterized by lesions with unusual lineage expression patterns. How these unusual cell-fate determination patterns are generated is unclear. We therefore investigated the role of the TSC in the *Drosophila* external sensory organ (ESO), a classic model of asymmetric cell division. In normal development, the sensory organ precursor cell divides asymmetrically through differential regulation of Notch signaling to produce a pIIa and a pIIb cell. We report here that inactivation of *Tsc1* and overexpression of the Ras homolog Rheb each resulted in duplication of the bristle and socket cells, progeny of the pIIa cell, and loss of the neuronal cell, a product of pIIb cell division. Live imaging of ESO development revealed this cell-fate switch occurred at the pIIa-pIIb 2-cell stage. In human angiomyolipomas, benign renal neoplasms often found in tuberous sclerosis patients, we found evidence of Notch receptor cleavage and Notch target gene activation. Further, an angiomyolipoma-derived cell line carrying biallelic *TSC2* mutations exhibited *TSC2*- and Rheb-dependent Notch activation. Finally, inhibition of Notch signaling using a γ -secretase inhibitor suppressed proliferation of *Tsc2*-null rat cells in a xenograft model. Together, these data indicate that the TSC and Rheb regulate Notch-dependent cell-fate decision in *Drosophila* and Notch activity in mammalian cells [...]

Find the latest version:

<https://jci.me/40221/pdf>





The evolutionarily conserved TSC/Rheb pathway activates Notch in tuberous sclerosis complex and *Drosophila* external sensory organ development

Magdalena Karbowiczek,¹ Diana Zitserman,¹ Damir Khabibullin,² Tiffiney Hartman,¹ Jane Yu,² Tasha Morrison,² Emmanuelle Nicolas,¹ Rachel Squillace,³ Fabrice Roegiers,¹ and Elizabeth Petri Henske²

¹Institute for Cancer Research, Fox Chase Cancer Center, Philadelphia, Pennsylvania, USA. ²Division of Pulmonary and Critical Care Medicine, Brigham and Women's Hospital, Boston, Massachusetts, USA. ³The Rothberg Institute for Childhood Diseases, Guilford, Connecticut, USA.

Mutations in either of the genes encoding the tuberous sclerosis complex (TSC), *TSC1* and *TSC2*, result in a multisystem tumor disorder characterized by lesions with unusual lineage expression patterns. How these unusual cell-fate determination patterns are generated is unclear. We therefore investigated the role of the TSC in the *Drosophila* external sensory organ (ESO), a classic model of asymmetric cell division. In normal development, the sensory organ precursor cell divides asymmetrically through differential regulation of Notch signaling to produce a pIIa and a pIIb cell. We report here that inactivation of *Tsc1* and overexpression of the Ras homolog Rheb each resulted in duplication of the bristle and socket cells, progeny of the pIIa cell, and loss of the neuronal cell, a product of pIIb cell division. Live imaging of ESO development revealed this cell-fate switch occurred at the pIIa-pIIb 2-cell stage. In human angiomyolipomas, benign renal neoplasms often found in tuberous sclerosis patients, we found evidence of Notch receptor cleavage and Notch target gene activation. Further, an angiomyolipoma-derived cell line carrying biallelic *TSC2* mutations exhibited *TSC2*- and Rheb-dependent Notch activation. Finally, inhibition of Notch signaling using a γ -secretase inhibitor suppressed proliferation of *Tsc2*-null rat cells in a xenograft model. Together, these data indicate that the TSC and Rheb regulate Notch-dependent cell-fate decision in *Drosophila* and Notch activity in mammalian cells and that Notch dysregulation may underlie some of the distinctive clinical and pathologic features of TSC.

Introduction

Tuberous sclerosis complex (TSC) is a multisystem tumor suppressor gene syndrome caused by mutations that inactivate either *TSC1* or *TSC2*. TSC is characterized by neurologic disease (seizures, mental retardation, and autism), pulmonary lymphangioleiomyomatosis (LAM), and hamartomatous tumors of the brain, heart, kidney, and skin (1). The hamartin and tuberin proteins (*TSC1* and *TSC2*, respectively) function as a heterodimeric complex to inhibit the Ras homolog Rheb, which activates the mammalian target of rapamycin (mTOR) complex 1 (TORC1) (2–7). The TSC/Rheb/TOR pathway is conserved in *Drosophila*, in which it has been shown to regulate cell size (8–15) and the timing of neuronal development (16).

Unusual cell lineage expression patterns are a hallmark of TSC lesions in humans. The central nervous system lesions in TSC include cortical tubers and subependymal giant cell astrocytomas, both of which contain distinctive “giant cells” that inappropriately coexpress neuronal and glial-lineage markers (17, 18). Outside the central nervous system, pulmonary LAM and renal angiomyolipomas are among the most clinically devastating features of TSC (19). LAM cells and angiomyolipoma cells express both smooth muscle and melanocytic markers, and angiomyolipomas exhibit differentiation plasticity, with vascular, smooth muscle, and fat

cells all arising from a common precursor cell (20). The molecular mechanisms underlying these unusual cell-fate determination patterns in TSC tumors are not well understood.

To study the potential role of the TSC signaling network in cell-fate determination, we used the *Drosophila* external sensory organ (ESO), which is a well-studied model of asymmetric cell division. The sensory organ precursor (SOP) cell divides asymmetrically to produce 2 daughter cells, the pIIa cell and the pIIb cell. The pIIa cell divides once more to form the external cells of the ESO (the socket and hair cells), and the pIIb cells divide twice to generate a neuron, a sheath cell, and an apoptotic glial cell (Figure 1A). The asymmetry between the pIIa and pIIb is established by differential regulation of Notch signaling. Activation of Notch signaling in the pIIa cell and suppression of Notch in the pIIb cell is controlled through multiple mechanisms, including asymmetric segregation of the Notch antagonist Numb to the pIIb cell during SOP mitosis (Figure 1A).

Here we show that inactivation of *Tsc1* or overexpression of Rheb in SOP cells results in a phenotype consistent with ectopic Notch activation: duplication of the pIIa cell and its progeny, the hair and socket cell, at the expense of the pIIb cell. We further find evidence for Notch receptor cleavage and Notch target gene activation in human angiomyolipoma tumors and an angiomyolipoma-derived cell line with biallelic *TSC2* inactivation. Our results reveal what we believe to be a novel, evolutionarily conserved pathway, in which the *TSC1*/*TSC2*/Rheb proteins regulate the activity of Notch, which in turn may act to regulate cell fate and cell prolifer-

Conflict of interest: The authors have declared that no conflict of interest exists.

Citation for this article: *J. Clin. Invest.* 120:93–102 (2010). doi:10.1172/JCI40221.

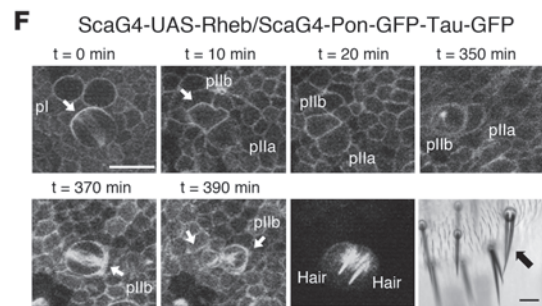
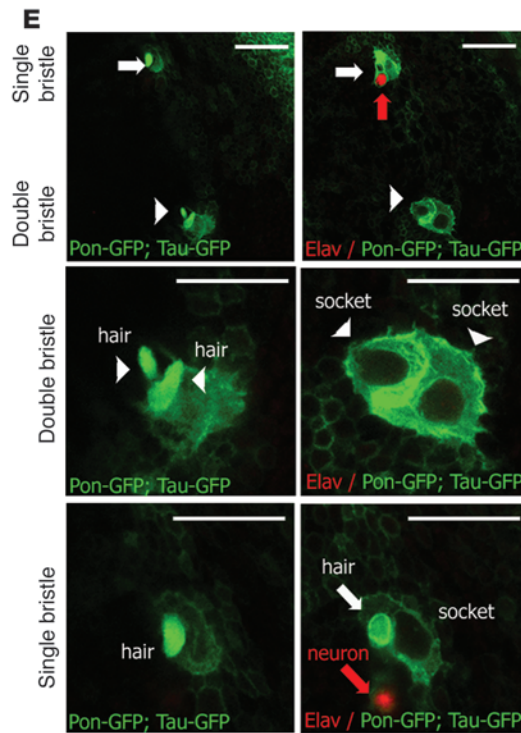
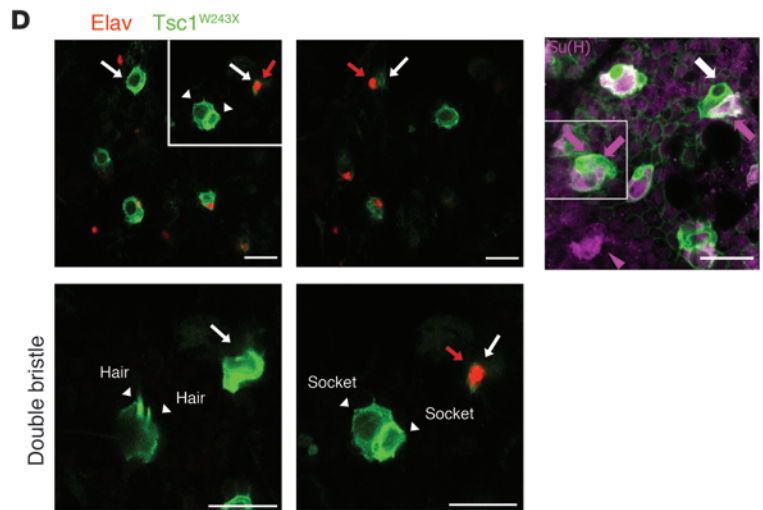
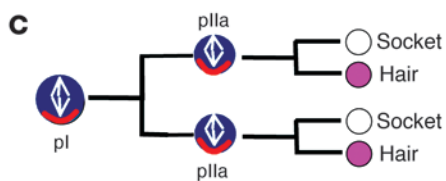
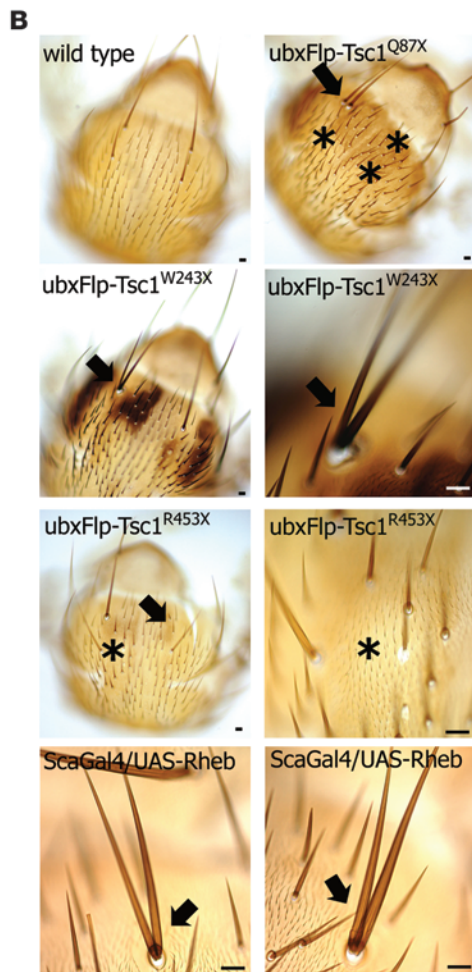
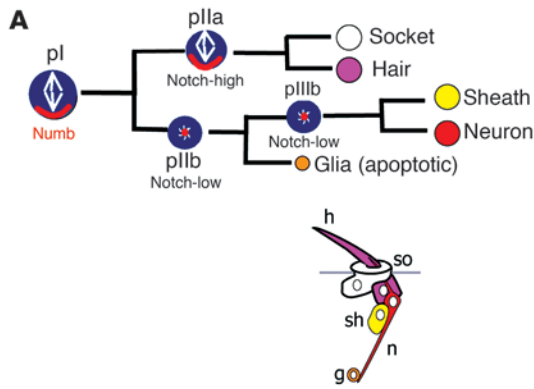


Figure 1

Tsc and Rheb regulate Notch-dependent cell-fate decisions in *Drosophila*. (A) The ESO lineage arises from a SOP cell (pl) and consists of 5 cells: 2 external cells, the hair (h) and socket (so), and 3 internal cells, the neuron (n), sheath (sh), and apoptotic glial cell (g). Numb (red) is asymmetrically localized in the mitotic pl and pIIa cells. The mitotic spindles of the pl and pIIa cells align on an anterior-posterior axis; the spindles of the pIIb and pIIIb cells align along the apical-basal axis. (B) Missing bristles and bald patches (asterisks) and duplicated bristles (arrows) in both *Tsc* mutant clones and *Rheb*-overexpressing ESOs. (C) *Rheb* expression inappropriately induces Notch activity in the pIIb cell, causing it to divide in a pIIa-like manner, resulting in a duplicate socket and hair cell. (D and E) Both correct cell fate specification (white arrows) and loss of internal neuron (Elav, red, red arrows) and extra socket [Su(H), purple, arrows and arrowhead] cells in *Tsc1* mutant clones (GFP, green) and *Rheb*-overexpressing ESOs. All panels are single XY sections extracted from a Z series. (D) Bottom panels are higher-magnification images of the boxed area from the top left panel. *Tsc* mutant organs exhibit extra external cells and loss neuron phenotypes (arrowheads). Su(H) immunostaining (top right panel, purple arrows) confirmed extra socket (boxed area). (E) *Rheb* overexpression results in duplication of external cells (white arrowheads) and loss of neurons (Elav, red). (F) Representative example of live imaging of a pIIb-to-pIIa cell-fate switch in *Rheb*-expressing pl cells, leading to sensory organ twinning phenotype. pl and pIIb cells divide within the plane of the epithelium (white arrows) and segregate Pon-GFP correctly to 1 daughter cell. Scan of the same cells in the living pupa at 12 hours after division reveals a double socket and double hair ESO, and the thorax of the same adult fly showed a sensory organ twinning from this SOP cluster (black arrow). Scale bar: 10 μ m (B and D–F).

eration. Notch activation may contribute to the unusual clinical manifestations of TSC, and targeting the Notch signaling network may provide a new clinical strategy for the therapy of TSC.

Results

Rheb regulates Notch-dependent cell-fate decisions in Drosophila. Based on previous observations that central nervous system lesions in TSC show inappropriate expression of neural and glial markers (17, 18), we asked whether TSC loss or *Rheb* activation results in cell-fate defects in the *Drosophila* ESO, a well-studied system for understanding neural cell fate choice, based on Notch signaling activation (Figure 1A). We generated mosaic clones of 3 *Tsc1* mutant alleles (*Tsc1*^{Q87X}, *Tsc1*^{W243X}, and *Tsc1*^{R453X}) on the fly thorax. Within these clones we observed 2 phenotypes: double bristles (twinning) and patches of bald cuticle (balding) (Figure 1B). We quantified these phenotypes in 17 flies with GFP-marked mosaic clones of 2 of the alleles, W243X and R453X (Figure 1D), using the mosaic analysis with a repressible cell marker (MARCM) system (see Methods). Twinning was present in 1.6% of the *Tsc1*^{W243X} ESOs and 5% of the *Tsc1*^{R453X} ESOs (Supplemental Table 1; supplemental material available online with this article; doi:10.1172/JCI40221DS1). Balding (lack of bristles) was observed in 33% of the GFP-positive SOPs.

To determine whether these cell fate phenotypes were a consequence of hyperactivation of *Rheb*, the target of the GTPase-activating domain of tuberlin (TSC2), we used the Gal4/upstream activating sequence (Gal4/UAS) system (21) to express *Rheb* within the SOP lineage, using the *scabrous* promoter (21, 22). Three percent of *Rheb*-expressing ESOs showed bristle twinning (Figure 1, B, E, and F, and Supplemental Table 1), similar to the *Tsc* mutant flies. Duplication of external cell fates at the expense of internal

cells in the ESO lineage is a hallmark of inappropriate activation of Notch signaling. We therefore examined whether the observed increase in external cells (twinning) in *Tsc* and *Rheb* mutant cells was accompanied by a loss of internal cells, using specific markers for the neuronal and socket cells, embryonic lethal, abnormal vision (ELAV) and suppressor of hairless [Su(H)], respectively. We found that ESOs with twinning were devoid of ELAV-positive cells (Figure 1, D and E), indicating lack of the neuron, and Su(H) was expressed in 2 cells instead of 1 cell (Figure 1D), indicating duplication of the socket cell. These data indicate that loss-of-function of the TSC proteins causes *Rheb*-mediated defects in ESO development, with duplication of the external cells (the socket and hair) and loss of the internal neuronal cell.

In order to further probe the nature of the defects we observed in *Tsc* mutant and *Rheb* overexpressing cells, we used live cell imaging to monitor asymmetric division and differentiation of ESO cells in living pupae of wild-type, *Tsc* mutant, and *Rheb* overexpressing cells. We used tau-GFP to observe the dynamics of the mitotic spindle and partner of numb-GFP (Pon-GFP) as a reporter of cell fate determinant asymmetric localization. Using this system, we visualized the development of the sensory organ from the division of the pl cell to morphogenesis of the differentiated sensory organ. In both *Tsc1* mutant and *Rheb* overexpressing cells, we observed delays or premature arrest of the cell cycle and increased apoptosis compared with wild-type cells (Supplemental Table 2 and Supplemental Figure 1). Cell cycle arrest and apoptosis resulted in the loss of sensory organs, consistent with the balding phenotype we observe in adult flies (Supplemental Figure 1).

We next focused on the analysis of asymmetric cell division in sensory organs that displayed the twin bristle phenotype. In wild-type SOP cell division, Pon formed a distinct crescent at the anterior cortex of the pl cell. As the pl cell divided, this crescent was segregated asymmetrically to the anterior pIIb daughter cell, as shown previously (23, 24). Interestingly, in *Rheb* overexpressing ESOs that subsequently developed duplication of hair and socket cells, we observed asymmetric targeting of Pon-GFP to the anterior cell cortex of the pl cell during mitosis and segregation of Pon-GFP to the pIIb daughter cell (Figure 1F). These data suggest that the bristle duplication phenotype is not likely a result defective segregation of cell fate determinants, such as Pon and Numb, during asymmetric cell division.

While the pl cell appears to divide in the correct orientation along the anterior-posterior axis under conditions of *Rheb* overexpression, our live imaging revealed a striking change in mitotic spindle alignment of the pIIb cells. In the wild-type fly, the pIIb cell aligns its spindle along the apical-basal axis, while the pIIa cell spindle aligns along the anterior-posterior axis (23, 25–27). In the *Rheb*-expressing flies, 12% of the pIIb cells aligned their spindles along the anterior-posterior or medial-lateral axis, instead of the apical-basal axis. Importantly, the pIIb cells with misaligned spindles subsequently gave rise to duplicate bristle and socket cells (Figure 1F). Despite the change in orientation of the mitotic spindle, Pon-GFP was correctly segregated asymmetrically to only 1 daughter cell. These findings are consistent with model whereby *Rheb* induces a pIIb-to-pIIa cell-fate switch by promoting ectopic Notch activation, resulting in the twinning phenotype (Figure 1, C–F).

Genetic interaction of Rheb with genes involved in sensory organ development. Our data indicate that *Rheb* activation or *Tsc* inactivation results in incorrect cell fate specification in the pIIb cell, despite correct asymmetric targeting of cell fate determinants such as

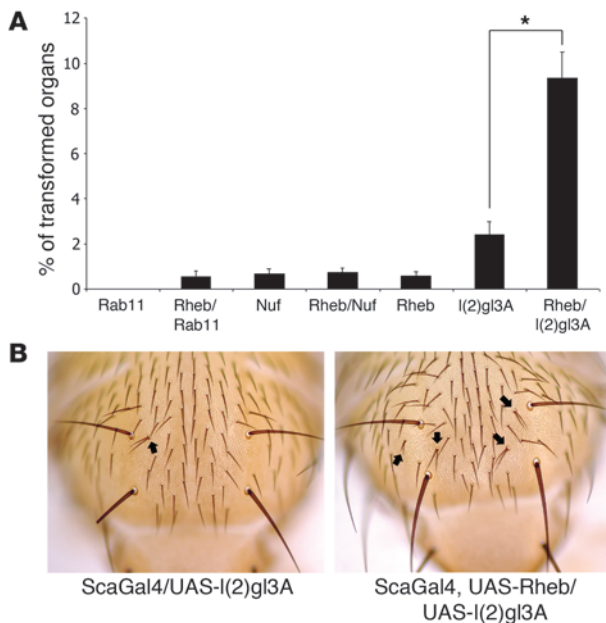


Figure 2

Genetic interaction of *Rheb* with other genes involved in sensory organ development. **(A)** Quantification of the twinning phenotype in *scaGal4*, UAS-*Rab11* (*Rab11*); *scaGal4*, UAS-*Rheb/Rab11* (*Rheb/Rab11*); *scaGal4*-UAS-*Nuf* (*Nuf*); *scaGal4*, UAS-*Rheb/Nuf* (*Rheb/Nuf*); *scaGal4*, UAS-*Rheb/CyO* (*Rheb*); *scaGal4*, UAS-*l(2)gl3A* [*l(2)gl3A*]; and *scaGal4*, UAS-*Rheb/l(2)gl3A* [*Rheb/l(2)gl3A*] flies (also see Supplemental Table 1). The bars indicate percentage of transformed ESOs. Data represent mean \pm SEM. **P* < 0.001. **(B)** Examples of the twinning phenotype (arrows) in *scaGal4*, UAS-*l(2)gl3A* and *scaGal4*, UAS-*Rheb/l(2)gl3A* flies. Original magnification, $\times 100$.

Numb during SOP mitosis. In order to determine whether *Rheb* acts in the same pathway or in a parallel pathway to Numb, we used a genetic approach and assessed the interaction between *Rheb* and 3 other genes that impact Notch activity: a nonphosphorylatable form (3A) of lethal giant larvae [*l(2)gl*], nuclear fallout (*Nuf*), and *Rab11*, nuclear fallout (*Nuf*), and *Rab11*. *Nuf* and *Rab11* regulate Notch activity by controlling Delta trafficking (28), while *l(2)gl3A* regulates Notch activity by controlling the asymmetric targeting of Numb (29). When combined with *l(2)gl3A* expression, *Rheb* synergistically enhanced the twinning phenotype (Figure 2 and Supplemental Table 1), while when combined with *Rab11* or *Nuf*, *Rheb* had only a minor impact on twinning (Figure 2A and Supplemental Table 1). From these data we conclude that *Rheb* likely functions to control Notch signaling during ESO development via a pathway that is parallel to asymmetric targeting of Numb.

Renal angiomyolipomas express Notch and Delta and have higher levels of Notch activity than normal kidney. We next explored the hypothesis that the TSC pathway regulates Notch activity in mammalian cells. First, we asked whether angiomyolipomas express Notch and Delta. Using real-time RT-PCR, we tested 4 angiomyolipomas from a TSC patient and found that NOTCH1 and delta-like 1 (DLL1) were expressed at levels similar to or higher than nor-

mal kidney tissue from the same patient (Figure 3, A and B). The Notch transcriptional target hairy and enhancer of split 1 (HES1) was expressed in all 4 angiomyolipomas at levels higher than in normal kidney, suggesting that Notch signaling is active in angiomyolipomas (Figure 3C). To directly test whether Notch signaling is activated, we tested additional sporadic angiomyolipomas by Western immunoblot using anti-Hes1 and an antibody to the carboxy terminus of Notch. Notch protein levels and activation of the Notch receptor, which was identified by examination of the 110-kDa band representing the γ -secretase cleavage product of Notch1, were enhanced in all 4 tumors compared with normal kidney from the same patient. Furthermore, the Hes1 protein level was higher in all 4 angiomyolipomas compared with that in normal kidney (Figure 4). These data indicate that Notch is active in angiomyolipomas.

TSC2 and Rheb regulate Notch signaling in an angiomyolipoma-derived cell line. Given this evidence that Notch is active in angiomyolipoma tumors, we next investigated whether Notch activity is *Rheb* dependent, using the 621-101 cell line, which was derived from an angiomyolipoma and has inactivation of both alleles of the *TSC2* gene (30). Using real-time RT-PCR, we monitored the levels of endogenous HES1 and hairy/enhancer-of-split related with YRPW motif 1 (HEY1) in cells treated for 72 hours with the γ -secretase inhibitor, *N*-[*N*-(3,5-Difluorophenacetyl-L-alanyl)]-S-phenylglycine *t*-butyl ester (DAPT), which prevents Notch cleavage and activation. DAPT treatment decreased HES1 transcript level by 60% (Figure 5A), suggesting that these cells have Notch activity. Next, to determine whether this Notch activity is *Rheb* dependent, 621-101 cells were treated with *Rheb* siRNA. Depletion of *Rheb* significantly decreased HES1 and HEY1 transcript levels (Figure 5B). To further confirm that *Rheb* regulates HES1 and HEY1 levels, we reexpressed *TSC2*, which decreases the GTP-bound active form of *Rheb* via tuberlin's GTPase-activating pro-

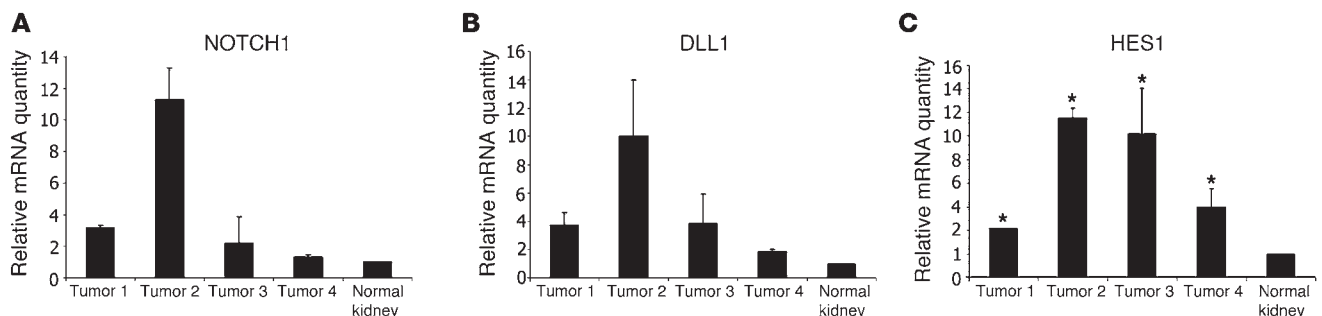
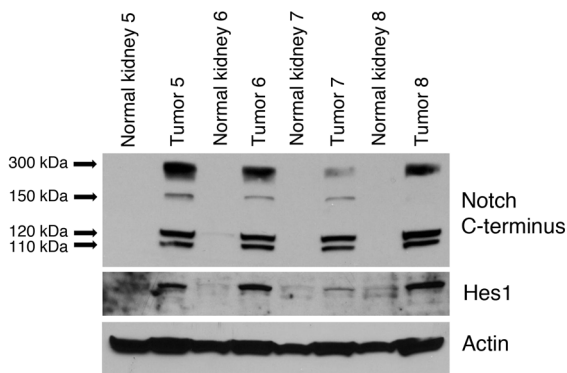


Figure 3

Expression of NOTCH1, DLL1, and HES1 in angiomyolipoma tumors. The level of NOTCH1 (A), DLL1 (B), and HES1 (C) transcript was measured by RT-PCR in 4 angiomyolipomas from a TSC patient, compared with normal kidney. Data represent mean \pm SEM. **P* < 0.05.

**Figure 4**

Evidence of Notch activation in angiomyolipomas. The level of cleaved Notch1 and Hes1 measured by Western blot in sporadic angiomyolipomas and normal kidney from 4 patients. Activated Notch1 was identified by examination of the 110-kDa band, which represents the γ -secretase cleavage product of Notch1 receptor.

tein domain. Expression of TSC2 decreased endogenous HES1 and HEY1 transcript levels (Figure 5C), similarly to Rheb siRNA. To test directly whether Rheb regulates Notch activity, 621-101 cells were treated with control or Rheb siRNA, and the presence of cleaved Notch was examined by Western immunoblotting. Depletion of Rheb decreased the level of the 110-kDa cleaved Notch product detected with anti-C terminus Notch1 antibody in the whole cell lysate (Figure 5D, left) and anti-cleaved Notch1 Val 1744 antibody in the nuclear fraction (Figure 5D, right).

TSC2 and Rheb regulate Notch signaling in mammalian cells. To determine whether TSC and Rheb regulate Notch activity in cells that are not derived from TSC patients, we measured the endogenous level of HES1 transcript in *Tsc2*-null mouse embryonic fibroblasts (MEFs). Consistent with our results from angiomyolipoma-derived cells, we found that *Tsc2*-null MEFs have higher levels of HES1 relative to littermate-derived control MEFs (Figure 6A). Next, we used HES1- and HEY1-luciferase reporter assays to monitor Notch activity in 3 melanoma-derived cell lines. Downregulation of Rheb with siRNA decreased HEY1-luciferase activity in all 3 cell lines and decreased HES1-luciferase activity in 2 of the lines (Figure 6B). In HEK293 cells, downregulation of TSC2 resulted in a 3-fold increase in HEY1-luciferase activity (Figure 6C), and downregulation of Rheb resulted in a 40% decrease in HEY1-luciferase activity (Figure 6D).

Rheb-dependent Notch activation is insensitive to TORC1 inhibition. The most well-studied target of the TSC/Rheb pathway is TORC1. Interestingly, in HEK293 cells treated with TSC2 siRNA, the TORC1 inhibitor rapamycin did not block the increased HEY1 luciferase activity (Figure 6E). To further explore whether Rheb-dependent Notch activation is rapamycin sensitive, we monitored endogenous levels of cleaved Notch by Western immunoblot in 621-101 cells. Treatment with DAPT for 72 hours (as a positive control) decreased levels of the 110-kDa band representing cleaved Notch (Figure 7A), which was also confirmed with an antibody detecting specifically cleaved Notch1 at Val 1744 (data not shown). Treatment with rapamycin (20 nM) did not inhibit cleaved Notch (Figure 7A), consistent with the results using the luciferase assay in HEK293 cells. These data suggest that Rheb's effects on Notch activity are TORC1 independent, with the caveat that it is increasingly recognized that TORC1 is not completely blocked by rapamycin. Therefore, we treated 621-101 cells with Torin 1, an ATP-competitive mTOR kinase inhibitor (31). Similarly to rapamycin, Torin 1 inhibited the phosphorylation of ribosomal protein S6 but did not inhibit Notch cleavage (Figure 7B), while as a control DAPT inhibited Notch cleavage but did not affect phosphory-

lation of S6. Finally, as a third approach to inhibit TORC1, we downregulated Raptor using siRNA. Similarly to rapamycin or Torin 1 treatment, downregulation of Raptor did not affect Notch cleavage but decreased phosphorylation of ribosomal protein S6 (Figure 6C). These results suggest that Rheb's activation of Notch is TORC1 independent.

Inhibition of Notch signaling inhibits the growth of Tsc2-null xenograft tumors. To determine whether Notch activity contributes to the growth of *Tsc2*-null cells, we injected *Tsc2*-null ELT3 cells, which were derived from the Eker rat model of TSC (32), bilaterally into the flank region of SCID mice. When the tumors reached 250 mm³, the animals were treated with the γ -secretase inhibitor, DAPT. DAPT inhibited tumor growth by more than 50% relative to vehicle control (Figure 8A) and was associated with a significant decrease in Ki-67 positivity (Figure 8B). DAPT's inhibition of Hes1 expression was confirmed by RT-PCR and immunoblot (Figure 8C). These results suggest that Notch activation drives proliferation, thereby promoting growth of *Tsc2*-null tumors.

Discussion

TSC is a multisystem disease, in which many tumors and lesions, including cerebral cortical tubers, subependymal giant cell astrocytomas, angiomyolipomas, and LAM, display unusual cell-fate determination patterns. While activation of Rheb and TORC1 is believed to drive the proliferative component of tumors carrying TSC1 or TSC2 mutations, little is known about the molecular basis of these cell lineage abnormalities. To investigate the cell fate abnormalities in TSC, we used the *Drosophila* ESO as a model. The ESO develops over approximately 6 hours, during the pupal stage, through a series of 4 asymmetric cell divisions. We tested 3 different *Tsc1* mutant alleles and found that all 3 disrupted cell fate assignments in the ESO, leading to a double bristle phenotype. The double bristle resulted from a cell-fate switch, in which the pIIb cell, which normally has low Notch activity and generates the internal cells, acquired the characteristics of the pIIa cell, which normally has high Notch activity and gives rise to the hair and socket cells. Similar double bristles were observed in flies overexpressing Rheb, further confirming the role of the TSC/Rheb signaling axis in ESO development. The impact of the TSC/Rheb pathway on cell fate appears to be lineage specific, since we did not observe any impact of Rheb expression in the wing. This result may explain why evidence of Rheb-induced Notch pathway activation was not observed in previous studies of the *Drosophila* eye (16) and could also be related to the cell-lineage specificity of TSC tumors.

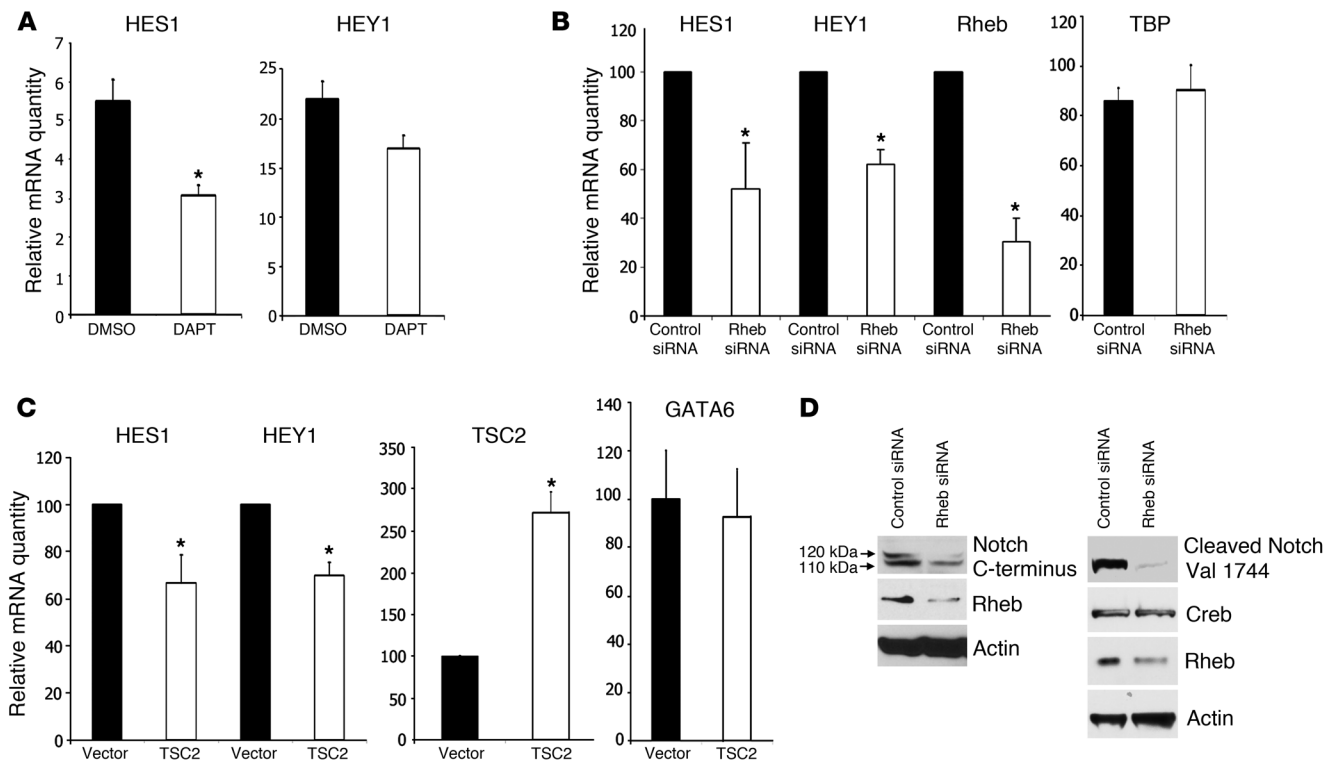


Figure 5 Rheb-dependent Notch activation in a *TSC2*-null angiomyolipoma-derived cell line (621-101 cells). **(A)** Seventy-two hours of 10 μ M DAPT treatment in 621-101 cells decreased endogenous HES1 and HEY1 transcripts measured by real-time PCR. Data represent mean \pm SEM. $*P < 0.05$. **(B)** Downregulation of Rheb in 621-101 cells decreased endogenous HES1 and HEY1 transcripts measured by real-time PCR relative to control siRNA. TATA box-binding protein (TBP) transcript was used as a control for changes in global RNA abundance and was not affected by downregulation of Rheb. Data represent mean \pm SEM. $*P < 0.05$. **(C)** Reexpression of tuberin in 621-101 cells decreased HES1 and HEY1 transcripts relative to vector control. GATA6 transcript was used as a control and was not affected by tuberin reexpression. Data represent mean \pm SEM. $*P < 0.05$. **(D)** Downregulation of Rheb by siRNA decreased levels of the 110-kDa band, representing the γ -secretase cleaved, active form of the Notch1 receptor (lower arrow) in 621-101 cells (left panels) in the whole-cell lysate and decreased levels of cleaved Notch1 at Val 1744 (right panels) in the nucleus. Actin and Creb were used as loading controls.

Multiple lines of data indicate that the regulation of Notch activity by the TSC proteins and Rheb is evolutionarily conserved between flies and mammals. Evidence of Notch pathway activation was present in angiomyolipoma tumor specimens. *TSC2* and Rheb were found to regulate Notch cleavage and Notch target gene activation in an angiomyolipoma-derived cell line carrying biallelic *TSC2* mutations. Evidence of Notch regulation by *TSC2* and Rheb was also observed in melanoma-derived cell lines, MEFs, and HEK293 cells. Furthermore, inhibition of Notch signaling blocked the growth of *Tsc2*-null xenograft tumors, suggesting that this connection that we believe to be novel between TSC/Rheb and Notch activity may be related to the proliferative aspects of TSC lesions as well as their cell-fate abnormalities.

Treatment with the TORC1 inhibitor rapamycin, the TORC1 and TORC2 inhibitor Torin 1, or downregulation of Raptor, a key component of TORC1 (33), did not inhibit Notch activation in *TSC2*-deficient cells. This is consistent with the lack of a twinning phenotype in flies expressing the Rheb target, dTOR kinase, in the SOP lineage (data not shown). These data suggest that Rheb’s regulation of Notch activity occurs via a TORC1-independent mechanism. TORC1 is the most well-studied effector of Rheb, but there are other indications that Rheb has rapamycin-insensitive

targets (34–36). The identification of TORC1-insensitive pathways regulated by Rheb and *TSC2* is particularly important clinically because TORC1 inhibitors have only partial clinical efficacy in patients with TSC and LAM. In the first completed trial, rapamycin as a single agent resulted in an approximately 50% regression of angiomyolipomas over 12 months of treatment, with nearly complete regrowth after discontinuation (37).

The Notch signaling pathway plays a central role in the regulation of neuronal progenitor cell differentiation (38, 39) and is required to maintain stem/progenitor cells in an undifferentiated status (40). Notch also impacts a broad range of cellular events during normal development and in tumors, including proliferation and migration (41–43). We speculate that Notch signaling in *TSC2*-deficient progenitor cells may underlie some of the clinical manifestations of TSC, by altering the terminal differentiation of these cells with subsequent inappropriate differentiation and/or proliferation. If this is correct, then a “pulse” of Notch inhibition could promote the completion of differentiation and thereby block further proliferation.

In summary, we report here that activation of Rheb leads to abnormalities in asymmetric cell division in *Drosophila* SOP cells. In mammalian cells, Rheb activates Notch, and Notch inhibition

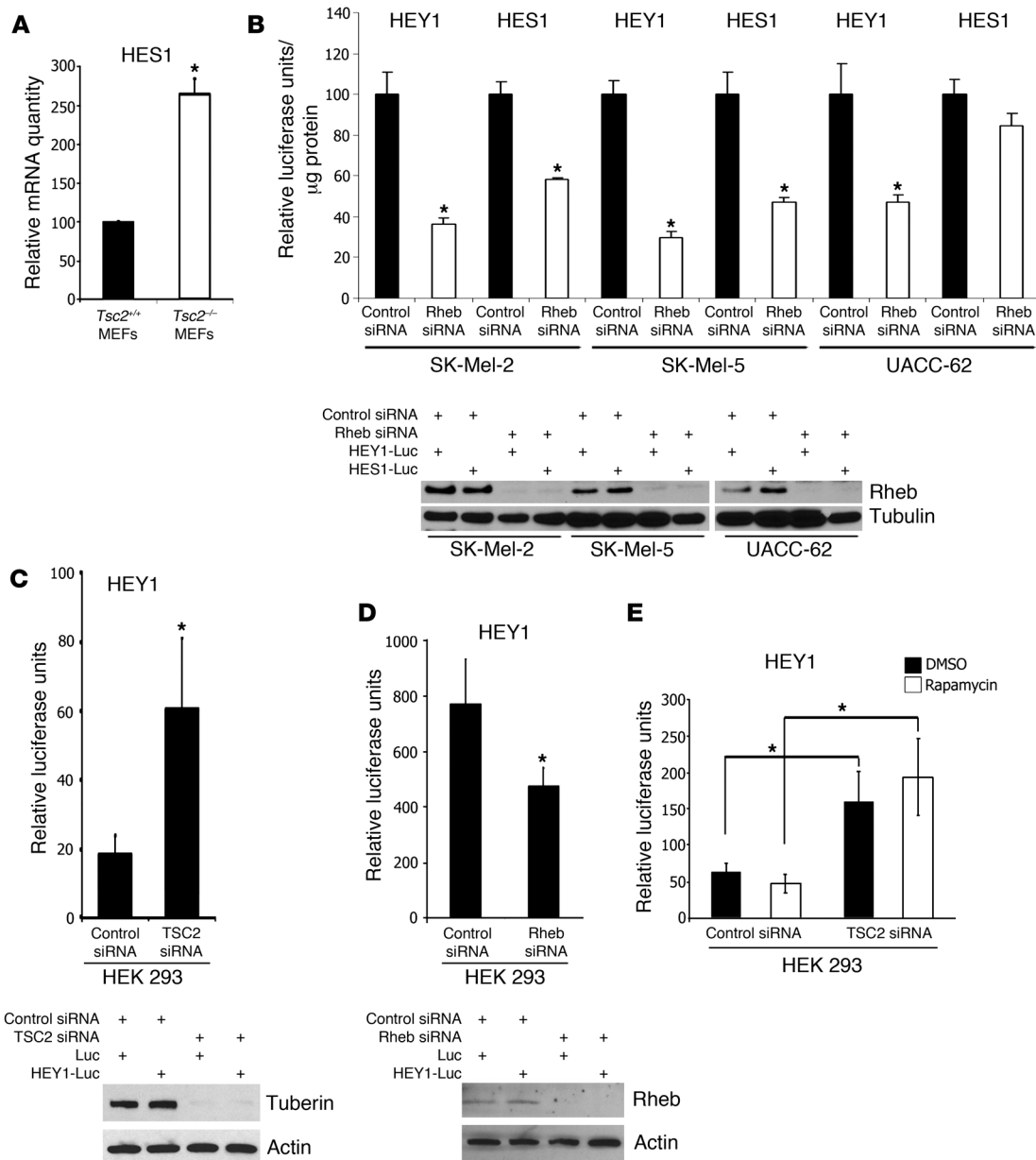


Figure 6

Rheb-dependent Notch activation in mammalian cells. (A) Endogenous HES1 transcript levels measured by real-time PCR were higher in *Tsc2*^{-/-}*p53*^{-/-} MEFs, compared with *Tsc2*^{+/+}*p53*^{-/-} MEFs. Data represent mean ± SEM. **P* < 0.05. (B) Rheb siRNA decreased HEY1-luciferase activity in 3 melanoma-derived cell lines and HES1-luciferase activity in 2 of 3 lines, relative to control siRNA. Cells were transfected with HEY1- or HES1-luciferase and with Rheb or control siRNA. Values were corrected to cells transfected with a promoter-less luciferase construct. Rheb downregulation was confirmed by immunoblot. Data represent mean ± SEM. **P* < 0.05. (C and D) TSC2 downregulation increased and Rheb downregulation decreased HEY1-luciferase activity relative to control siRNA. HEK293 cells were transfected with HEY1-luciferase (HEY1-Luc) or promoter-less control and TSC2 (C) or Rheb siRNAs (D). TSC2 and Rheb downregulation was confirmed by immunoblot. Data represent mean ± SEM. **P* < 0.05. (E) Rapamycin did not inhibit the HEY1-luciferase activity induced by loss of TSC2. HEK293 cells were transfected with HEY1-luciferase or promoter-less construct, followed by control- or TSC2 siRNA, and incubated for 72 hours with DMSO or 20 nM rapamycin. Data represent mean ± SEM. **P* < 0.05.

attenuates the growth of *Tsc2*-null cells in vivo. These findings reveal what we believe to be a previously unrecognized, evolutionarily conserved regulatory function of the TSC and Rheb proteins. Notch activation may contribute to the striking degree of cell-fate plasticity observed in TSC tumors, with angiomyolipomas dif-

ferentiating into smooth muscle, fat, and vessels and expressing melanocytic markers, as well as in cells within cortical tubers and subependymal giant cell astrocytomas expressing both neuronal and glial markers. Notch activation could also contribute to the neurologic manifestations of TSC, which include seizures, mental

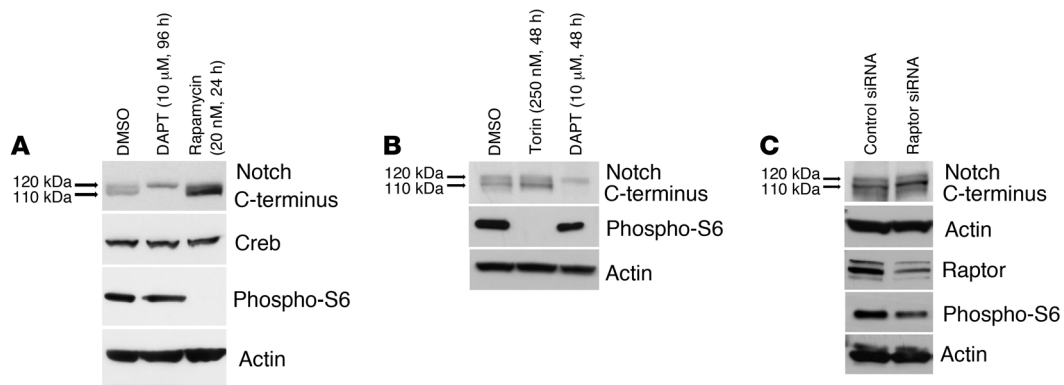


Figure 7

Notch cleavage is insensitive to TORC1 inhibition in patient-derived cells. **(A)** Levels of the 110-kDa band representing the γ -secretase cleaved, active form of the Notch receptor, were decreased following treatment with the γ -secretase inhibitor DAPT as expected, while in rapamycin and DMSO treated cells, the 110-kDa band was present. Rapamycin inhibited the phosphorylation of ribosomal protein S6 as expected. **(B)** Treatment with the Tor kinase inhibitor Torin 1 did not inhibit Notch cleavage in 621-101 cells but did inhibit the phosphorylation of ribosomal protein S6. DAPT did inhibit the 110-kDa cleaved Notch band as expected. **(C)** Raptor downregulation did not inhibit Notch cleavage but did inhibit the phosphorylation of ribosomal protein S6. Actin and Creb were used as loading controls.

retardation, and autism. Finally, our work may highlight elements of the Notch signaling pathway (Notch, its ligands, and enzymes required for signaling activation) as potential therapeutic targets for TSC and LAM patients, for whom novel therapeutic concepts are urgently needed.

Methods

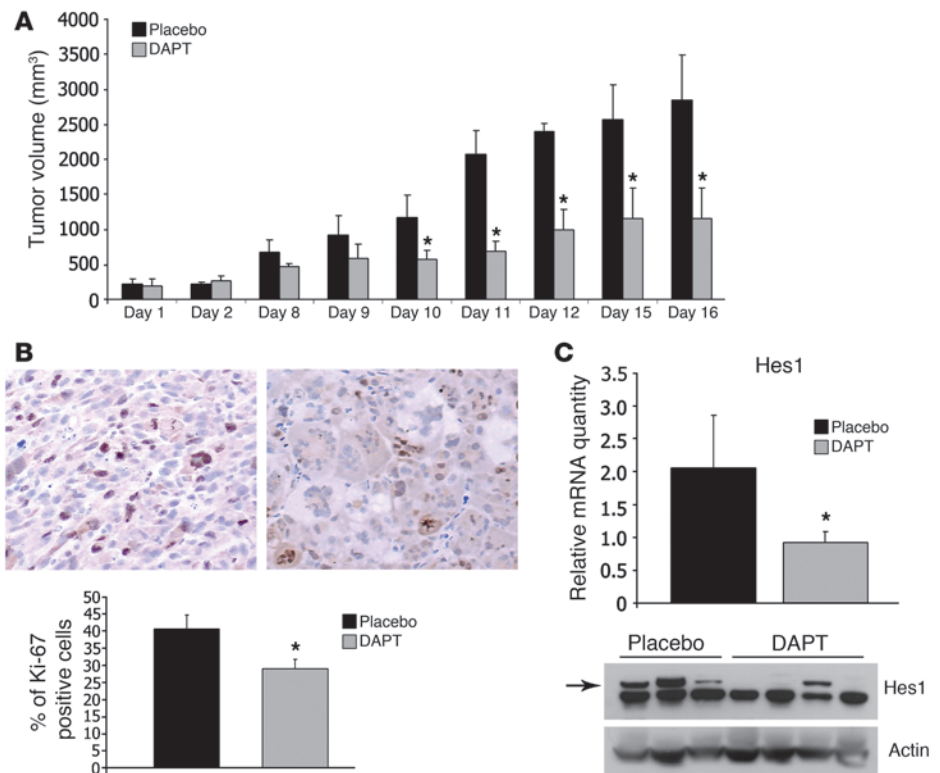
Fly strains and statistics. To generate mosaic flies expressing mutant Tsc1 in the SOP cells, we used the flippase recognition target/flippase recombination enzyme (FLP/FRT) system. Mutant clones were identified using the

MARCM system (44), which generates GFP-labeled cell clones with homozygous mutations. Yellow white (*yw*), *ubx-FLP*; *scabrous-Gal4* (*scaGal4*), UAS-Pon-GFP, UAS-tau-GFP; FRT82B *tubulin-Gal 80* females were crossed to *yw*; FRT82BTsc1^{Q87X}/TM3Sb⁻ or to *yw*; FRT82BTsc1^{W243X}/TM3Sb⁻ and to *yw*; FRT82BTsc1^{R453X}/TM3Sb⁻ males (provided by I. Hariharan, University of California, Berkeley, California, USA).

To generate flies with transient expression of Rheb, we used the Gal4-UAS system (21). *yw*; *scaGal4*/curly of oyster (*yw*; *scaGal4*/CyO) females were crossed to *w*; UAS Rheb males (provided by F. Tamanoi, University of California, Los Angeles, California, USA).

Figure 8

DAPT suppresses growth, proliferation, and Notch pathway activation in *Tsc2*-null xenograft tumors. **(A)** Growth of *Tsc2*-null ELT3 cell xenograft tumors in mice treated with DAPT (10 mg/kg/d) or placebo control. Data represent tumor volume (mm³) (mean \pm SEM of DAPT-treated (*n* = 4) or placebo-treated (*n* = 3) mice. **P* < 0.05. **(B)** Ki-67 staining of placebo- (left panel) and DAPT-treated (right panel) xenograft tumors (original magnification, \times 100) and quantification of results. DAPT treatment reduced the proliferation index. Data represent mean \pm SEM. **P* < 0.05. **(C)** DAPT treatment of *Tsc2*-null tumors decreased endogenous Hes1 transcript level, measured by real-time PCR (mean \pm SEM; **P* < 0.05), and the level of Hes1 protein (arrow, upper band), measured by immunoblot.





To monitor the dynamics of SOP lineage division and spindle orientation the *scaGal4* promoter was used to drive UAS-Pon-GFP and tau-GFP expression in *Rheb* transgenic flies. Female *scaGal4*, Pon-GFP, tau-GFP/*CyO* flies (22, 23) were crossed to *yw/w; scaGal4*, UAS *Rheb/CyO* males.

To test for enhancement of the twinning phenotype in *Rheb* flies, we crossed females of either *yw; scaGal4* or *yw/w; scaGal4*, UAS *Rheb/CyO* to either males UAS-*l(2)gl3A* (provided by J. Knoblich, Institute of Molecular Biotechnology of the Austrian Academy of Sciences, Vienna, Austria) or UAS-Rab11-YFP (stock no. 9790) or UAS-EP3324 (*Nuf*) (both from Bloomington *Drosophila* Stock Center).

To statistically analyze the fly crosses for synergism, the sum of the means of twinning in *Rheb*-expressing and *l(2)gl3A*-expressing flies was compared with the mean of twinning in flies with *Rheb* and *l(2)gl3A* coexpression. The chance that the observed results represented synergy rather than additivity was calculated using the normal approximation to the distributions of the 3 means values.

Time-lapse microscopy and image quantification. For time-lapse microscopy, *Drosophila* pupae were dissected and imaged as previously described (33). For overnight movies, z stacks were acquired at 10-minute intervals using the vertical section scan mode on a Bio-Rad 1024 confocal microscope. Imaging was conducted over a large area; therefore, individual clusters are pixilated. For imaging of fixed samples, z stacks were acquired by using Nikon eclipse C1 confocal microscope.

RNA extraction and real-time RT-PCR. Total RNA was isolated using the RNeasy kit (Qiagen) according to manufacturer's instructions. RNA was quantified using the Agilent 2100 BioAnalyzer in combination with a RNA 6000 Nano LabChip. RNA was reverse-transcribed using Moloney murine leukemia virus RT (Ambion) and a mixture of anchored oligo(dT) and random decamers. For each sample, 2 RT reactions were performed with inputs of 50 and 10 ng. Using TaqMan chemistry, 5'-nuclease assays were run on a 7900HT Sequence Detection System (Applied Biosystems). Ct values were converted to quantities (in arbitrary units) using a standard curve (5 points; 5-fold dilutions) established with a calibrator sample. For each sample, the 2 values of relative quantity were averaged.

Antibodies. The following antibodies were used: rat anti-ELAV (1:300, 7E8A10; Developmental Studies Hybridoma Bank), rat anti-Su(H) (provided by F. Schweisguth, École Normale Supérieure, Paris, France), anti-mouse Alexa Fluor 555 (Invitrogen), mouse anti-tubulin and mouse anti-actin (Sigma-Aldrich), and rabbit anti-Raptor, rabbit anti-phospho-S235/236 S6 ribosomal protein, anti-cleaved Notch1 Val 1744 (lot no. 5; Cell Signaling Technology), rabbit anti-Notch C terminus and rabbit anti-tuberin (Santa Cruz Biotechnology Inc.), rabbit anti-Rheb and rabbit anti-HES1 (Abcam), and rabbit anti-Ki67 (Vector Laboratories Inc.).

siRNA and luciferase assays. For siRNA downregulation, cells were transfected with 100 nM *Rheb*, *TSC2*, or Raptor SMARTpool siRNA, or nonspecific control siRNA (all from Dharmacon) using Mirus Trans-IT TKO Transfection reagent (Mirus). For luciferase assays, HEK293 cells were first transfected with the indicated siRNA and then, 24 hours later, with pHEY1-luciferase DNA or promoter-less luciferase control. Melanoma-derived cells were

transfected with pHEY1-luciferase or pHES1-luciferase DNA or promoter-less luciferase control simultaneously with siRNA. Both, pHEY1-luciferase and pHES1-luciferase DNA constructs were provided by M. Gessler (University of Würzburg, Würzburg, Germany). Luciferase levels were measured after addition of luciferase substrate, and the difference of relative luciferase units after correction to background (luciferase control) was calculated.

Nuclear fractionation. The preparation of nuclear extracts was performed using CelLytic NuCLEAR Extraction Kit (Sigma-Aldrich). Briefly, cells were allowed to swell with hypotonic buffer, then were disrupted using syringe and needle. The cytoplasmic fraction was removed, and nuclear proteins were released from the nuclei by a high salt buffer.

DAPT, rapamycin, and Torin 1 treatment. Cells were treated for indicated times with 10 μ M DAPT (Calbiochem), 20 nM rapamycin (Biomol), or 250 nM Torin 1 (provided by D. Sabatini, Whitehead Institute for Biomedical Research, Cambridge, Massachusetts, USA and N. Gray, Dana Farber Cancer Institute, Boston, Massachusetts, USA).

Induction of subcutaneous tumors in nude mice. ELT3 cells were inoculated bilaterally into the posterior back region of 6-week-old immunodeficient C.B17 *SCID* female mice. Tumor length, width, and depth were monitored with a Vernier caliper. When tumors reached 250 mm³, mice were randomly assigned to intraperitoneal DAPT (Calbiochem) at a dose of 10 mg/kg/d for 3 consecutive days, followed by 4 days without treatment (45) or vehicle control. The Fox Chase Cancer Center Institutional Animal Care and Use Committee approved this protocol.

Statistics. Both 2-tailed and 1-tailed Student's *t* tests were used for all statistical analysis. *P* values of less than 0.05 were considered statistically significant.

Acknowledgments

We thank Sandy Jablonski and the Fox Chase Cancer Center Confocal Microscopy Facility for assistance with imaging; I. Hariharan, J. Knoblich, F. Schweisguth, and F. Tamanoi for fly stocks and reagents; M. Gessler for the HEY1-luciferase constructs; David Sabatini and Nathaniel Gray for Torin 1; and E. Golemis and J. Chernoff for their critical review of the manuscript. This work was supported by a postdoctoral fellowship to M. Karbowiczek from The LAM Foundation (Cincinnati, Ohio, USA), the Tuberous Sclerosis Alliance (Silver Spring, Maryland, USA), NIH RO1 DK51052 and HL81147 (to E.P. Henske), and NIH RO1 NS059971 (to F. Roegiers).

Received for publication September 8, 2009, and accepted in revised form October 21, 2009.

Address correspondence to: Elizabeth Petri Henske, Brigham and Women's Hospital, One Blackfan Circle, Karp 6, Boston, Massachusetts 02115, USA. Phone: (617) 355-9049; Fax: (617) 355-9016; E-mail: Ehenske@partners.org. Or to: Fabrice Roegiers, Fox Chase Cancer Center, 333 Cottman Ave., Philadelphia, Pennsylvania 19111, USA. Phone: (215) 728-5518; Fax: (215) 214-2412; E-mail: Fabrice.Roegiers@fccc.edu.

1. Crino PB, Henske EP. New developments in the neurobiology of the tuberous sclerosis complex. *Neurology*. 1999;53(7):1384-1390.
2. Plank TL, Yeung RS, Henske EP. Hamartin, the product of the tuberous sclerosis 1 (*TSC1*) gene, interacts with tuberlin and appears to be localized to cytoplasmic vesicles. *Cancer Res*. 1998;58(21):4766-4770.
3. Tee AR, Manning BD, Roux PP, Cantley LC, Blenis J. Tuberous sclerosis complex gene products, Tuberlin and Hamartin, control mTOR signaling by acting as a GTPase-activating protein complex toward Rheb. *Curr Biol*. 2003;13(15):1259-1268.
4. Inoki K, Li Y, Xu T, Guan KL. Rheb GTPase is a direct target of TSC2 GAP activity and regulates mTOR signaling. *Genes Dev*. 2003;17(15):1829-1834.
5. Garami A, et al. Insulin activation of Rheb, a mediator of mTOR/S6K/4E-BP signaling, is inhibited by TSC1 and 2. *Mol Cell*. 2003;11(6):1457-1466.
6. Castro AF, Rebhun JF, Clark GJ, Quilliam LA. Rheb binds tuberous sclerosis complex 2 (*TSC2*) and promotes S6 kinase activation in a rapamycin- and farnesylation-dependent manner. *J Biol Chem*. 2003;278(35):32493-32496.
7. Sarbassov DD, Ali SM, Sabatini DM. Growing roles for the mTOR pathway. *Curr Opin Cell Biol*. 2005;17(6):596-603.
8. Ito N, Rubin GM. *gigas*, a *Drosophila* homolog of tuberous sclerosis gene product-2, regulates the cell cycle. *Cell*. 1999;96(4):529-539.
9. Tapon N, Ito N, Dickson BJ, Treisman JE, Hariharan IK. The *Drosophila* tuberous sclerosis complex gene homologs restrict cell growth and cell proliferation. *Cell*. 2001;105(3):345-355.
10. Potter CJ, Huang H, Xu T. *Drosophila* Tsc1 functions with Tsc2 to antagonize insulin signaling in regulating cell growth, cell proliferation, and organ size. *Cell*. 2001;105(3):357-368.
11. Gao X, Pan D. TSC1 and TSC2 tumor suppressors antagonize insulin signaling in cell growth. *Genes*



- Dev.* 2001;15(11):1383–1392.
12. Radimerski T, Montagne J, Hemmings-Mieszczak M, Thomas G. Lethality of *Drosophila* lacking TSC tumor suppressor function rescued by reducing dS6K signaling. *Genes Dev.* 2002;16(20):2627–2632.
 13. Zhang Y, Gao X, Saucedo LJ, Ru B, Edgar BA, Pan D. Rheb is a direct target of the tuberous sclerosis tumour suppressor proteins. *Nat Cell Biol.* 2003;5(6):578–581.
 14. Saucedo LJ, Gao X, Chiarelli DA, Li L, Pan D, Edgar BA. Rheb promotes cell growth as a component of the insulin/TOR signalling network. *Nat Cell Biol.* 2003;5(6):566–571.
 15. Stocker H, et al. Rheb is an essential regulator of S6K in controlling cell growth in *Drosophila*. *Nat Cell Biol.* 2003;5(6):559–565.
 16. Bateman JM, McNeill H. Temporal control of differentiation by the insulin receptor/tor pathway in *Drosophila*. *Cell.* 2004;119(1):87–96.
 17. Roske B, Stoltenberg G, Baier PM, Konig R, Schlote W. Tuberous sclerosis complex with disseminated telencephalic distribution of atypical cells and their relation to corticogenesis. *Clin Neuropathol.* 2003;22(3):119–128.
 18. Jozwiak J, Jozwiak S, Skopinski P. Immunohistochemical and microscopic studies on giant cells in tuberous sclerosis. *Histol Histopathol.* 2005;20(4):1321–1326.
 19. Crino PB, Nathanson KL, Henske EP. The tuberous sclerosis complex. *N Engl J Med.* 2006;355(13):1345–1356.
 20. Karbowniczek M, Yu J, Henske EP. Renal angiomyolipomas from patients with sporadic lymphangiomyomatosis contain both neoplastic and non-neoplastic vascular structures. *Am J Pathol.* 2003;162(2):491–500.
 21. Brand AH, Perrimon N. Targeted gene expression as a means of altering cell fates and generating dominant phenotypes. *Development.* 1993;118(2):401–415.
 22. Roegiers F, Younger-Shepherd S, Jan LY, Jan YN. Bazooka is required for localization of determinants and controlling proliferation in the sensory organ precursor cell lineage in *Drosophila*. *Proc Natl Acad Sci U S A.* 2001;98(25):14469–14474.
 23. Roegiers F, Younger-Shepherd S, Jan LY, Jan YN. Two types of asymmetric divisions in the *Drosophila* sensory organ precursor cell lineage. *Nat Cell Biol.* 2001;3(1):58–67.
 24. Bellaiche Y, Gho M, Kaltschmidt JA, Brand AH, Schweisguth F. Frizzled regulates localization of cell-fate determinants and mitotic spindle rotation during asymmetric cell division. *Nat Cell Biol.* 2001;3(1):50–57.
 25. Gho M, Bellaiche Y, Schweisguth F. Revisiting the *Drosophila* microchaete lineage: a novel intrinsically asymmetric cell division generates a glial cell. *Development.* 1999;126(16):3573–3584.
 26. Schweisguth F. [Cell polarity and asymmetric division in the peripheral nervous system of *Drosophila*]. *J Soc Biol.* 2003;197(1):17–22.
 27. Roegiers F, Jan YN. Asymmetric cell division. *Curr Opin Cell Biol.* 2004;16(2):195–205.
 28. Emery G, et al. Asymmetric Rab 11 endosomes regulate delta recycling and specify cell fate in the *Drosophila* nervous system. *Cell.* 2005;122(5):763–773.
 29. Betschinger J, Mechtler K, Knoblich JA. The Par complex directs asymmetric cell division by phosphorylating the cytoskeletal protein Lgl. *Nature.* 2003;422(6929):326–330.
 30. Yu J, Astrinidis A, Howard S, Henske EP. Estradiol and tamoxifen stimulate LAM-associated angiomyolipoma cell growth and activate both genomic and nongenomic signaling pathways. *Am J Physiol Lung Cell Mol Physiol.* 2004;286(4):L694–L700.
 31. Thoreen CC, et al. An ATP-competitive mTOR inhibitor reveals rapamycin-insensitive functions of mTORC1. *J Biol Chem.* 2009;284(12):8023–8032.
 32. Howe SR, Everitt JL, Gottardis MM, Walker C. Rodent model of reproductive tract leiomyomata: characterization and use in preclinical therapeutic studies. *Prog Clin Biol Res.* 1997;396:205–215.
 33. Kim DH, et al. mTOR interacts with raptor to form a nutrient-sensitive complex that signals to the cell growth machinery. *Cell.* 2002;110(2):163–175.
 34. Karbowniczek M, et al. Regulation of B-Raf kinase activity by tuberin and Rheb is mammalian target of rapamycin (mTOR)-independent. *J Biol Chem.* 2004;279(29):29930–29937.
 35. Karbowniczek M, Robertson GP, Henske EP. Rheb inhibits C-raf activity and B-raf/C-raf heterodimerization. *J Biol Chem.* 2006;281(35):25447–25456.
 36. Saito K, Araki Y, Kontani K, Nishina H, Katada T. Novel role of the small GTPase Rheb: its implication in endocytic pathway independent of the activation of mammalian target of rapamycin. *J Biochem.* 2005;137(3):423–430.
 37. Bissler JJ, et al. Sirolimus for angiomyolipoma in tuberous sclerosis complex or lymphangiomyomatosis. *N Engl J Med.* 2008;358(2):140–151.
 38. Morrison SJ, et al. Transient Notch activation initiates an irreversible switch from neurogenesis to gliogenesis by neural crest stem cells. *Cell.* 2000;101(5):499–510.
 39. Artavanis-Tsakonas S, Rand MD, Lake RJ. Notch signaling: cell fate control and signal integration in development. *Science.* 1999;284(5415):770–776.
 40. Bao ZZ, Cepko CL. The expression and function of Notch pathway genes in the developing rat eye. *J Neurosci.* 1997;17(4):1425–1434.
 41. Weinmaster G, Kopan R. A garden of Notch-ly delights. *Development.* 2006;133(17):3277–3282.
 42. Leong KG, Gao WQ. The Notch pathway in prostate development and cancer. *Differentiation.* 2008;76(6):699–716.
 43. Kerbel RS. Tumor angiogenesis. *N Engl J Med.* 2008;358(19):2039–2049.
 44. Lee T, Luo L. Mosaic analysis with a repressible cell marker for studies of gene function in neuronal morphogenesis. *Neuron.* 1999;22(3):451–461.
 45. Sjolund J, et al. Suppression of renal cell carcinoma growth by inhibition of Notch signaling in vitro and in vivo. *J Clin Invest.* 2008;118(1):217–228.