

Antibody-drug conjugates in breast cancer: overcoming resistance and boosting immune response

Hannah L. Chang, ... , Heather L. McArthur, Isaac S. Chan

J Clin Invest. 2023;133(18):e172156. <https://doi.org/10.1172/JCI172156>.

Review

Antibody-drug conjugates (ADCs) have emerged as a revolutionary therapeutic class, combining the precise targeting ability of monoclonal antibodies with the potent cytotoxic effects of chemotherapeutics. Notably, ADCs have rapidly advanced in the field of breast cancer treatment. This innovative approach holds promise for strengthening the immune system through antibody-mediated cellular toxicity, tumor-specific immunity, and adaptive immune responses. However, the development of upfront and acquired resistance poses substantial challenges in maximizing the effectiveness of these therapeutics, necessitating a deeper understanding of the underlying mechanisms. These mechanisms of resistance include antigen loss, derangements in ADC internalization and recycling, drug clearance, and alterations in signaling pathways and the payload target. To overcome resistance, ongoing research and development efforts are focused on urgently identifying biomarkers, integrating immune therapy approaches, and designing novel cytotoxic payloads. This Review provides an overview of the mechanisms and clinical effectiveness of ADCs, and explores their unique immune-boosting function, while also highlighting the complex resistance mechanisms and safety challenges that must be addressed. A continued focus on how ADCs impact the tumor microenvironment will help to identify new payloads that can improve patient outcomes.

Find the latest version:

<https://jci.me/172156/pdf>



Antibody-drug conjugates in breast cancer: overcoming resistance and boosting immune response

Hannah L. Chang,^{1,2} Blake Schwettmann,^{1,2} Heather L. McArthur,^{1,2} and Isaac S. Chan^{1,2,3}

¹Department of Internal Medicine, Division of Hematology and Oncology, ²Harold C. Simmons Comprehensive Cancer Center, and ³Department of Molecular Biology, University of Texas Southwestern Medical Center, Dallas, Texas, USA.

Antibody-drug conjugates (ADCs) have emerged as a revolutionary therapeutic class, combining the precise targeting ability of monoclonal antibodies with the potent cytotoxic effects of chemotherapeutics. Notably, ADCs have rapidly advanced in the field of breast cancer treatment. This innovative approach holds promise for strengthening the immune system through antibody-mediated cellular toxicity, tumor-specific immunity, and adaptive immune responses. However, the development of upfront and acquired resistance poses substantial challenges in maximizing the effectiveness of these therapeutics, necessitating a deeper understanding of the underlying mechanisms. These mechanisms of resistance include antigen loss, derangements in ADC internalization and recycling, drug clearance, and alterations in signaling pathways and the payload target. To overcome resistance, ongoing research and development efforts are focused on urgently identifying biomarkers, integrating immune therapy approaches, and designing novel cytotoxic payloads. This Review provides an overview of the mechanisms and clinical effectiveness of ADCs, and explores their unique immune-boosting function, while also highlighting the complex resistance mechanisms and safety challenges that must be addressed. A continued focus on how ADCs impact the tumor microenvironment will help to identify new payloads that can improve patient outcomes.

Introduction

Antibody-drug conjugates (ADCs) are a class of therapeutics that have been developed to increase the specificity of cytotoxic therapy by linking cytotoxic molecules to a targeted protein carrier. A linker connects the cytotoxic drug to the protein carrier and can be non-cleavable or designed with specific release mechanisms to allow for controlled cleavage inside the tumor cell, rendering the linker cleavable (1). Through this unique drug design, ADCs deliver highly potent cytotoxic drugs, or payloads, in a targeted fashion to antigen-expressing cells. In breast cancer, this class of biopharmaceutical drugs has revolutionized treatment because it enables targeted therapy across multiple breast cancer subtypes (2, 3). Traditionally, breast cancer therapies have relied on categorizing the disease into subtypes, determined by the presence of certain proteins, such as estrogen receptor, progesterone receptor, and human epidermal growth factor receptor 2 (HER2). Triple-negative breast cancer (TNBC) is another subtype, defined by the lack of expression of these antigen targets.

Current landscape

The first ADCs to reach FDA approval were developed for the treatment of hematologic malignancies. In 2013, the first approved ADC for solid tumors, an anti-HER2 ADC, trastuzumab emtansine (T-DM1), gained FDA approval for patients with metastatic HER2-positive breast cancer. This approval was based

on the EMILIA trial, a phase III trial comparing T-DM1 to lapatinib plus capecitabine in patients with metastatic HER2-positive breast cancer who were previously treated with trastuzumab and a taxane-based therapy (4, 5). Since then, T-DM1 has been brought into the adjuvant setting, and two additional ADCs, trastuzumab deruxtecan-nxki (T-DXd) and sacituzumab govitecan-hziy (SG), have been approved for the treatment of breast cancer in the metastatic setting (3, 6–8). While also directed against HER2, T-DXd conjugates trastuzumab to a topoisomerase I (TOP1) inhibitor, exatecan payload, through a stable protease-sensitive cleavable linker (9). The improved efficacy can likely be explained, in part, by a higher drug-to-antibody ratio coupled with T-DXd's tumor-selective cleavable linker, which is an enzymatically cleavable peptide that is decomposed by intratumoral lysosomes (10, 11). SG consists of a trophoblast cell surface antigen 2 (TROP2) antibody that is linked to SN-38, the active metabolite of irinotecan, via a hydrolyzable linker. Several ADCs have undergone trials for the treatment of breast malignancies that have led to their approval (Table 1). These trials have also been reviewed extensively elsewhere (12–14).

Mechanisms of action and key elements

Manufacture of ADCs is typically completed through three processes: generation of the antibody, synthesis of the small-molecule drug, and conjugation of those two components (15). An ADC directs its payload to cancer cells through binding of the monoclonal protein carrier to cell surface target antigens. The ADC receptor complex is subsequently internalized via antigen-mediated endocytosis and undergoes lysosomal processing during which the payload is released into the intracellular space. The expression levels of a target antigen can vary greatly within each tumor and

Conflict of interest: The authors have declared that no conflict of interest exists.

Copyright: © 2023, Chang et al. This is an open access article published under the terms of the Creative Commons Attribution 4.0 International License.

Reference information: *J Clin Invest.* 2023;133(18):e172156.

<https://doi.org/10.1172/JCI172156>.

Table 1. Approved ADCs in breast malignancies

Pharmaceutical company	Target	Drug	Indication	Supporting trials
Genentech/Roche	HER2	Ado-trastuzumab emtansine (T-DM1)	HER2-positive metastatic breast cancer, adjuvant early-stage HER2-positive breast cancer	EMILIA (4), KATHERINE (6)
Daiichi Sankyo	HER2	Trastuzumab deruxtecan-nxki (T-DXd)	HER2-positive and HER2-low metastatic breast cancer	DESTINY Breast-01 (7), DESTINY Breast-04 (2)
Gilead	TROP2	Sacituzumab govitecan-hziy (SG)	Metastatic TNBC and metastatic HR-positive breast cancer	ASCENT (8), TROPICS-02 (3)

between different lesions within the same individual. Certain payloads possess membrane permeability and can diffuse to neighboring cells, irrespective of the expression of the target antigen, resulting in a cytotoxic effect. This phenomenon, known as the “bystander effect,” provides an additional advantage by addressing tumor antigen heterogeneity (16).

Through a process called conjugation, the antibody is linked to a synthetic molecule, which is typically a small-molecule drug (15). During conjugation, the drug-to-antibody molar ratio (DAR) is determined through liquid chromatography–mass spectrometry. The DAR is critical to ensure that enough drug is appended to specific regions of the antibody (17). Because the linkage of the drug to the antibody is stochastic in nature, there can be drastic changes in efficacy based on whether the drug is insufficient, overabundant, or on nonspecific sites on the antibody. The design and mechanisms of actions of ADCs have been exhaustively reviewed in previously published reviews on ADCs (18–21).

Toxicity

When normal tissues express the target antigen, target-mediated endocytosis can lead to direct toxicity to normal tissues (22). However, the majority of dose-limiting toxicity is related to target-independent uptake mechanisms into normal cells (22). The mechanisms underlying these observations encompass ADC uptake through the Fcγ receptor (FcγR) on normal cells, nonspecific endocytic processes in normal cells, and linker-drug stability (22). In the investigation of T-DXd lung toxicity using monkey models, diffuse lung toxicity affecting the alveolar space was observed, rather than being localized to HER2-expressing bronchial cells (23). This observation suggests that lung toxicity associated with T-DXd may not be dependent on HER2-mediated uptake. Instead, target-independent uptake by normal cells and the stability of the payload linker likely have a more important impact. T-DXd primarily accumulates in alveolar macrophages in monkey lungs (23), and the protease cathepsin B, expressed in these macrophages, is known to be responsible for cleaving the linker of T-DXd (11). Hence, the uptake of T-DXd by macrophages and subsequent cathepsin-mediated payload cleavage may account for the increased rates of T-DXd lung toxicity.

Mechanisms of resistance and strategies to overcome resistance

Despite the clinical impact of ADCs, a portion of patients have de novo or primary resistance to ADCs, and another subset of patients initially respond to ADCs but later develop resistance. Several trials have reported disease progression without an initial tumor response to ADCs in breast cancer (Table 2). Mechanisms of

ADC resistance are complex but are generally related to resistance against the antibody or payload component (Figure 1). Resistance to the entire ADC complex can occur through physical barriers, such as the binding site barrier (24). This barrier is the result of a dense tumor microenvironment that prevents the ADC from distributing throughout the tumor at the dose used for ADCs. Physical barriers can also be seen with ADCs targeting brain tumors due to their trouble passing the blood-brain barrier (25). Other factors like absorption, distribution, metabolism, and excretion (collectively known as ADME) behaviors, DAR value, and dosage can also contribute to resistance. ADME behaviors can result in lower amounts of circulating ADC, like in the case of an h1F6-targeting antibody that is cleared faster when conjugated to a chemotherapeutic payload (26). Higher DAR values can also increase clearance from the body (26). Dose-related mechanisms of resistance have been further investigated in dose escalation studies or via a cyclical method in which treatment of tumors occurs at high doses for short periods (27).

Antibody resistance

Antigen loss. Several studies have shown that with exposure to ADCs, there is a marked decrease in antigen levels shortly following initiation of treatment (28). Decreased HER2 was seen in human breast cancer cell lines at the protein and RNA levels upon chronic exposure to T-DM1, suggesting a transcriptional mechanism of HER2 downregulation (28). Although treatment with ADCs could select for clones of antigen-negative cancer cells, the bystander effect of ADCs could potentially alleviate clonal expansion of resistant cells. However, artificial CRISPR/Cas9-mediated *TROP2* deletion in TNBC cells has been shown to suppress TNBC cell growth (29). Downregulation of *TROP2* through the generation of small hairpin RNA targeting *TROP2* also decreased the invasion ability of the TNBC cell line, suggesting that antigen downregulation in response to *TROP2* ADC treatment could potentially impair cancer cells (29). However, the impact of

Table 2. De novo resistance to ADCs in breast cancer trials

Trial	Overall response rate (%)	Progressive disease as best response (%)
EMILIA (4)	43	Not reported
DESTINY Breast-01 (7)	60	1.9
DESTINY Breast-04 (2)	53 (HR ⁺), 50 (HR ⁻)	7.8
ASCENT (8)	31	24
TROPICS-02 (3)	21	Not reported

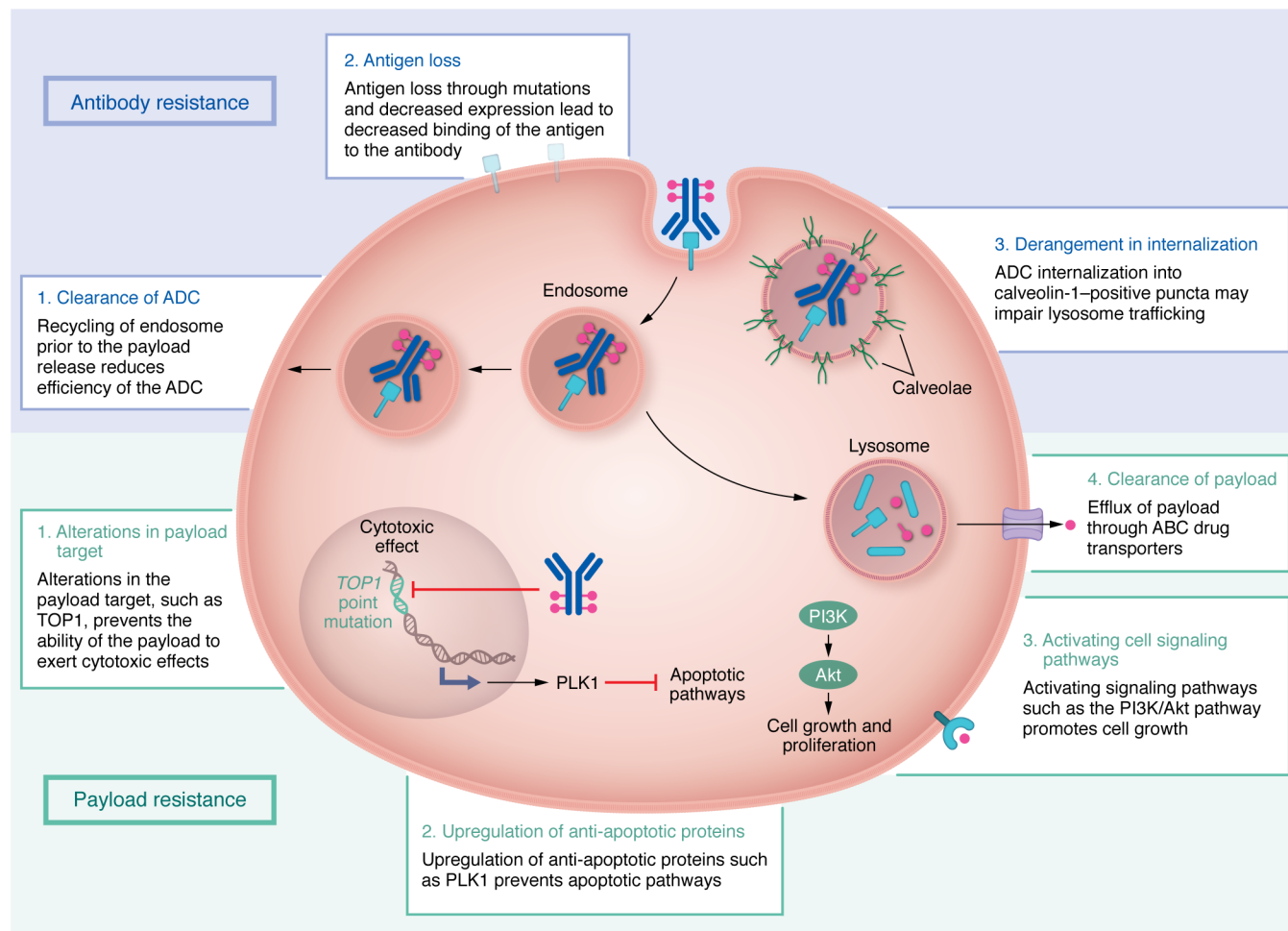


Figure 1. Mechanisms of resistance. Resistance mechanisms to antibody-drug conjugates (ADCs) can be broadly classified into two categories: antibody resistance and payload resistance. Antibody resistance mechanisms include clearance of ADC, antigen loss, and derangement in internalization. Payload resistance mechanisms include alterations in the payload target, upregulation of antiapoptotic proteins, activation of cell signaling pathways, and clearance of the payload.

TROP2 loss under anti-TROP2 pressure has not been explored; thus, the translational benefit of these findings remains unclear.

In addition to ADC-targeted destruction of antigen-expressing cells, antigen loss has also been shown to result from acquired molecular alterations in the antibody target. Studies specifically observed acquired molecular alterations in the antibody target TROP2 in patients who experienced a prolonged response but eventually progressed on SG. The TACSTD2/TROP2T256R missense mutation encodes a protein that has markedly lower binding affinity to the antibody, which can explain one mechanism of resistance (30). Truncated forms of the antigen are another potential mechanism of resistance. While resistance to trastuzumab has been associated with a truncated form of HER2, p96HER2, it is not yet clear whether p96HER2 also reduces binding to anti-HER2 ADCs like T-DM1 and T-DXd (31).

Derangement of ADC internalization and recycling. Cancer cells can also develop resistance through derangements in ADC internalization and trafficking to lysosomes. Endocytosis followed by lysosomal degradation is the central route by which ADCs are processed. Investigators evaluating T-DM1 resistance found that

in resistant cells, ADCs are instead internalized into caveolin-1-positive (CAV-1-positive) puncta with altered trafficking to lysosomes. Internalization into CAV-1-positive puncta does not allow for appropriate enzymatic processing of the non-cleavable linker of T-DM1. Additionally, because these CAV-1-positive compartments have a neutral pH, charged payloads are unable to permeate through the membrane to act on neighboring cells, thus reducing bystander activity of the ADC (32).

Even when ADCs are appropriately internalized, a percentage of these endosomes are rapidly recycled back to the cell membrane before release of the payload, leading to clearance of the ADC out of the cell (33). Increased lysosomal pH was found to prevent the proteinase activity of lysosomal enzymes and subsequently decrease the activity of T-DM1 (34).

One strategy to overcome these mechanisms of resistance is to promote more rapid internalization and effective lysosomal trafficking. Bivalent biparatopic HER2-directed ADCs are designed to address this hypothesis by targeting two non-overlapping epitopes on HER2 to induce HER2 clustering (35). Theoretically, this design creates a large meshwork of receptor clustering

and results in rapid and enhanced HER2 internalization versus any monospecific antibody. Biparatopic antibodies also lead to increased lysosomal degradation (36, 37). This approach is being tested in phase I clinical studies (38).

Payload resistance

Drug clearance. Drug clearance through increased expression of drug efflux pumps is one of the most studied pathways of chemotherapy resistance (39). Similar mechanisms have been evaluated with ADCs given that the primary mechanism of action is through the delivery of chemotoxic payloads. In cell lines resistant to brentuximab vedotin, the ATP-binding cassette (ABC) drug transporter ABCB1 has been shown to be upregulated, increasing the export of the payload monomethyl auristatin E (MMAE) out of the cell (40). Similarly, studies looking at mechanisms of resistance to the anti-nectin-4 ADC enfortumab vedotin-ejfv also found upregulation of ABCB1 expression in resistant tumors (41). Sensitivity to enfortumab vedotin-ejfv has been shown to be restored through newer-generation ABC transport inhibitors, such as tariquidar, which targets ABCB1 (41). Additionally, clearance by efflux pumps is affected by the type of payload used. For example, ABCB1-overexpressing cells exposed to an MMAE payload had dramatically reduced MMAE activity (42). In contrast, the activity of the payload monomethyl auristatin F (MMAF) was not affected by the ABCB1-overexpressing cell line (42). The difference in susceptibility of these compounds to efflux may be related to alkyl substitutions of large size on MMAF (42).

Alterations in signaling pathways. As with many other cancer chemotherapeutics, ongoing exposure to ADCs can lead to selective pressure for acquired resistance mutations. Studies evaluating gemtuzumab ozogamicin resistance in acute myeloid leukemia (AML) cells have shown activation of the phosphatidylinositol-3-kinase (PI3K)/protein kinase B (AKT) pathway, and inhibition of this pathway with the investigational AKT inhibitor MK-2206 was able to sensitize resistant AML cells to calicheamicin- γ , a DNA-binding cytotoxic antibody and the payload of gemtuzumab ozogamicin (43). In breast cancer cells, loss of the tumor suppressor PTEN results in activation of PI3K/AKT signaling. T-DM1-resistant cells were found to have reduced PTEN levels, which supports the finding that PI3K/AKT activation leads to resistance. Combination with a PI3K inhibitor, CDC-0941, led to synergistic inhibition of breast cancer cell growth, suggesting that combination therapy with this class of inhibitors could circumvent ADC resistance (44).

Modulation of the apoptotic signaling pathway is another pathway of resistance. Polo-like kinase 1 (PLK1), a mitotic kinase that regulates the cell cycle, is upregulated in T-DM1-resistant cells (45). Inhibition of PLK1 with volasertib reversed resistance by inducing spindle assembly checkpoint-dependent mitotic arrest, followed by cyclin-dependent kinase-1 (CDK1) phosphorylation and inactivation of the antiapoptotic protein B cell lymphoma 2 (Bcl-2) (45). In T-DM1-resistant cells, overexpression of the leukemia inhibitory factor receptor (LIFR) has been shown to activate the signal transducer and activator of transcription 3 (STAT3) pathway (46). This cascade led to upregulation of the antiapoptotic proteins Bcl-xL, Bcl-2, survivin, and Mcl-1, and subsequently conferred T-DM1 resistance (46). STAT3 activation was overcome

by napabucasin, a STAT inhibitor, suggesting that this pathway is another potential target (46).

Targeting the DNA damage response pathway in combination with ADCs is another approach to overcome payload resistance. As a part of the DNA damage response pathway, DNA-topoisomerase complexes are usually removed by poly(ADP-ribose) polymerase-dependent (PARP-dependent) mechanisms, which allows the DNA breaks to be repaired. PARP inhibitors block this pathway to allow for persistent DNA strand breaks and subsequent cell death. Phase I/II trials combining SG and the PARP inhibitors talazoparib and rucaparib have shown promising synergistic antitumor effects (47). Tolerability may be an issue with this combination, and further investigation may help in determining the optimal dose and schedule.

Alterations in payload target. Studies have also found alterations in the payload target TOP1 following exposure to T-DM1. The point mutation of TOP1 is believed to alter the DNA binding affinity of the enzyme and prevent adequate binding of the payload to the enzyme-DNA interface (30). These findings are not unique to ADCs and are consistent with historical reports of alterations in TOP1 that confer resistance to conventional chemotherapy treatments using TOP1 inhibitors (48).

Payload diversification may be one way to overcome payload resistance due to alterations in the payload target. NCT04152499 (ClinicalTrials.gov) is a phase I/II clinical trial evaluating a TROP2-targeted ADC, with a belotecan derivative payload. Patients with HR⁺/HER2⁻ advanced or metastatic breast cancer who previously received therapy with an anti-HER2 ADC (T-DXd) for HER2-low tumors are eligible. The sequential administration of ADCs with distinct mechanisms of action for their payloads holds the potential to overcome resistance to payload alterations.

Urgent need for biomarkers. Given that response rates to ADCs can be as low as 21% in trials, there is a need for improved ADC biomarkers that appropriately select patients and improve the therapeutic index of these drugs. The FDA recently approved a companion diagnostic based on immunohistochemistry (IHC) to aid the assessment of HER2-low breast cancer and to predict response to T-DXd in this population (49). However, there are no approved biomarkers that can predict which patients will develop resistance to ADCs. Traditionally, biomarkers are clinically detected by IHC expression or other assays such as FISH, although both methods have their own limitations, including sampling error in focally receptor-positive tumors and limited reproducibility of receptor assays (50, 51). Newer methods can involve imaging and circulating tumor products (52).

However, biomarker development for ADCs must overcome several challenges. Upon evaluation of phase I and II clinical trials conducted with ADCs using preselected target antigens, 19% of the trials showed no relationship between target expression and response to the ADC (53). This finding suggests that the presence of target expression is only one important component of patient selection. Instead, payload resistance and response markers, such as tubulin- β 3 (TUBB3) and TOPO1, are being evaluated on formalin-fixed, paraffin-embedded tissue from pancreatic adenocarcinoma tumors and colorectal cancer tumors (54, 55).

Other challenges to ADC biomarker development include tumor heterogeneity and the accuracy of sampling from one biop-

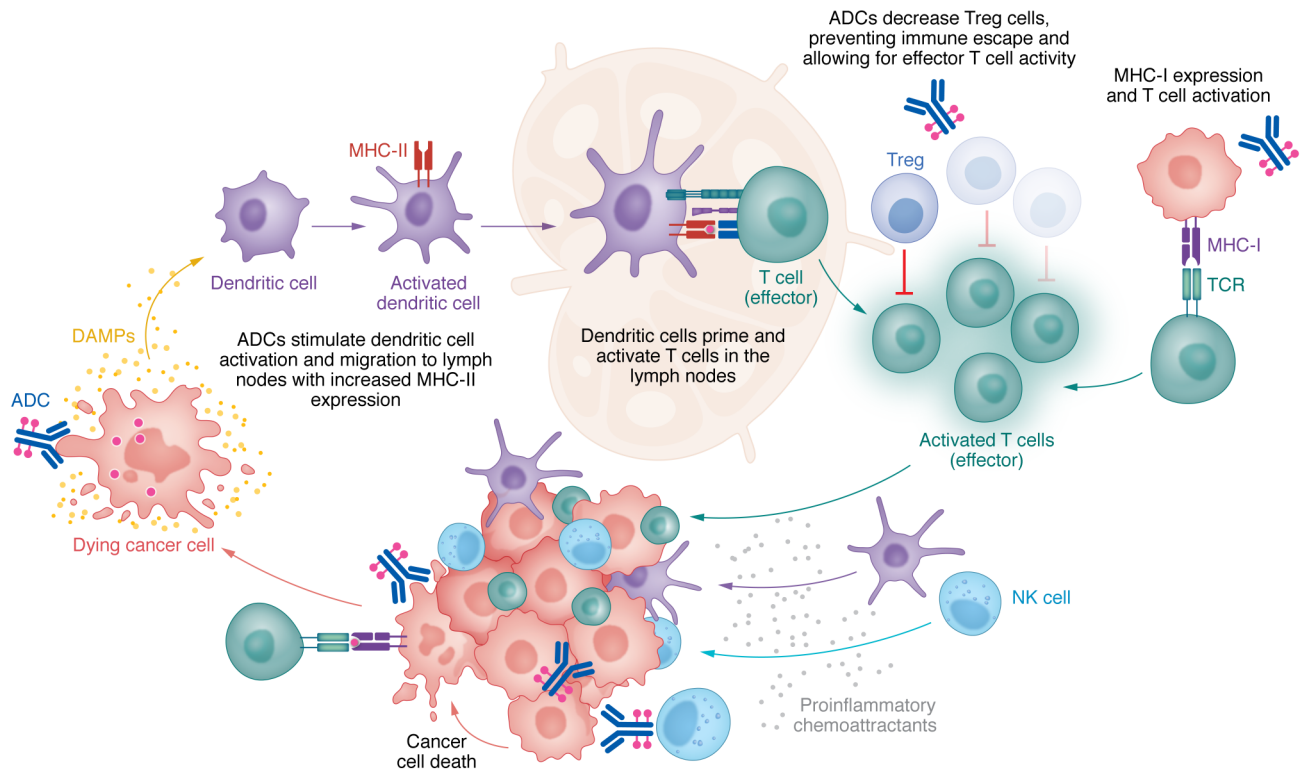


Figure 2. Antibody-drug conjugates in the cancer-immunity cycle. ADCs play a crucial role in activating tumor immunity across all stages of the cancer-immunity cycle. Targeted release of the ADC payload leads to tumor cell death and subsequent release of DAMPs that stimulate activation of dendritic cells. Mature dendritic cells facilitate antigen uptake and migration to lymph nodes. In the lymph nodes, ADCs reduce Tregs and augment MHC-I expression, thereby promoting the effective activity of cytotoxic (effector) T cells. ADCs enhance leukocyte infiltration and expand CD4⁺ and CD8⁺ T cells, NK cells, and IFN- γ production. Secretion of proinflammatory chemoattractants such as IFN- γ recruits immune cells including NK cells, dendritic cells, and CD4⁺ and CD8⁺ T cells. The antibody component of ADCs activates the immune system via antibody-dependent cell-mediated cytotoxicity (ADCC), antibody-dependent cellular phagocytosis (ADCP), and complement-dependent cytotoxicity (CDC).

sy at one moment in time (56). Newer modes of assessing protein include imaging of radiolabeled monoclonal antibody (mAb) by positron emission tomography (PET), termed “immuno-PET.” These methods quantify the mAb in tissues and could be used to improve the therapeutic window of ADCs through dose optimization (57). In the ZEPHIR trial for breast cancer, baseline Zr-trastuzumab imaging was obtained before T-DM1 therapy followed by computerized tomography (CT) scans to assess response (58). Of patients classified as HER2 positive by immuno-PET, 72% had a positive response in imaging. Conversely, of patients classified as HER2 negative by immuno-PET, 88% had stable or progressive disease (58).

Detection and measurement of antigens on circulating tumor cells (CTCs) is another noninvasive companion diagnostic tool to identify patients likely to benefit from treatment with ADCs. An immunofluorescence-based assay has been developed to evaluate the target antigen of six-transmembrane epithelial antigen of prostate 1 (STEAP1) on CTCs in metastatic castration-resistant prostate cancer patients (59). In a phase I study evaluating the ADC targeting STEAP1 in metastatic castration-resistant prostate cancer, there was general consistency between CTCs, the prostate cancer screening antigen PSA, and response on imaging (60).

Because of its ease of collection, circulating tumor DNA (ctDNA) is rapidly being integrated clinically as a noninvasive biomarker for cancer diagnosis, staging, treatment response

monitoring, and residual disease (61). The phase II HERALD trial administered T-DXd to patients with an advanced solid tumor malignancy with HER2 amplification as identified by a 74-gene sequencing ctDNA panel, Guardant 360 (62). In this trial, tumor tissue, ctDNA, and CTCs are all being collected to better understand the role of these tests as predictive biomarkers and makers of resistance. While the results have not yet been reported, there is a need for additional studies to inform the role of liquid biopsies in clinical practice.

Enhancing immune antitumor activity

In addition to cytotoxic benefits of the payload, ADCs engage the immune system across all stages of the cancer-immunity cycle (Figure 2) (63). Like mAbs, ADCs are believed to activate cellular immune defense through antibody-dependent cell-mediated cytotoxicity (ADCC), antibody-dependent cellular phagocytosis (ADCP), and complement-dependent cytotoxicity (CDC). During ADCC, the antibody binds the target antigen through fragment, antigen-binding (Fab). The Fc γ R portion of effector immune cells binds to the Fc portion of antibodies to orchestrate ADCC that kills antibody-coated target cells through the release of perforin and other cytotoxic granules (64). For example, in NK cells, CD16 is one Fc γ R that, upon binding, phosphorylates immune tyrosine-based activating motifs (ITAMs), leading to NK cell proliferation

and degranulation (65). NK cells are critical immune cells that respond to ADCC initiation by both T-DXd and TDM1, even after payload conjugation (11, 66). In ADCP, the Fc portion of the antibody binds and activates the Fc γ Rs on tumor-associated macrophages (TAMs) to induce phagocytosis and thus degradation of the target cell. Multiple studies have also shown that this mechanism is involved in tumor clearance and the anti-immune effect of mAbs (67, 68). While the contribution of this ADCP to ADC efficacy is not currently known, preclinical studies have shown that ADCs can mediate ADCP (69).

To improve the effectiveness of IgG antibodies, researchers are conducting Fc engineering studies to strengthen the neonatal Fc receptor (FcRn) interactions, which play a crucial role in protecting IgG molecules from degradation and therefore extend the circulating half-life of IgG antibodies (70, 71). However, altering the Fc regions in a way that suppresses Fc γ R binding can impact the immunogenicity of the modified Fc regions by reducing the binding to C1q, and consequently diminishing effector functions such as ADCC and CDC (71). Therefore, finding a balance between prolonging antibody half-life through FcRn interactions and maintaining optimal binding to other components of the immune system is crucial in the development of these agents.

There is increasing interest in using ADCs to increase tumor-specific immunity. One approach is to use ADCs to target and reduce immunosuppression in the tumor microenvironment (TME). For example, immature dendritic cells (DCs) can be immunosuppressive, and therapeutics that activate their maturation are of interest (72–74). Dolastatins, the payload of brentuximab vedotin, have been shown to induce DC maturation as evidenced by a dose-dependent increase in the DC maturation markers CD80, CD86, CD40, and MHC-II in all tests performed on human cells (75). The payload of brentuximab vedotin has also been shown to promote antigen uptake and migration of DCs to the tumor-draining lymph nodes, although the direct mechanisms underlying this observation remain unclear (75). The payload of T-DXd has also been shown to activate DC maturation through upregulation of CD86 and major MHC-II expression (76). Moreover, ansamitocin P3, the precursor of the payload DM1, facilitates DC activation by stimulating the migration of tumor-resident DCs to tumor-draining nodes (77). In this study, the expression of MHC-II and DC costimulatory molecules, CD80, CD86, and CD40, was significantly increased after ansamitocin P3 exposure in comparison with controls.

In contrast to increased DC maturity to reduce overall immunosuppression in the TME, Tregs were found to be decreased in peripheral blood samples of patients treated with brentuximab vedotin. A shift in the CD3⁺IFN- γ ⁺ and CD8⁺IFN- γ ⁺ effector T cell (Teff)/CD4⁺CD25⁺FoxP3⁺ Treg ratio further supports the potential role that ADCs play to augment antitumor immune responses by reducing the immunosuppressive contributions from specific regulatory immune cells within the TME (75). There is currently little information on the impact of ADCs on other suppressive immune cells such as myeloid-derived suppressor cells, and future studies will need to be conducted to better understand their interaction.

Additional studies have shown that ADCs augment tumor-specific immunity by altering the pattern of tumor immune cell infiltrates. Leukocyte infiltration is increasingly being recognized

as a prognostic and predictive biomarker in breast cancer (78). A study evaluating tumor-infiltrating lymphocytes following administration of T-DM1 found expansion of CD4⁺ and CD8⁺ effector T cells and IFN- γ production. To highlight the importance of T cells for the efficacy of T-DM1, the investigators removed the CD4⁺ and CD8⁺ T cells and revealed that these T-DM1-treated mice had reduced survival time. However, further evaluation of immune cell subsets increased numbers of NK and natural killer T (NKT) cells upon exposure to T-DM1, suggesting that these effector immune cells are also important in the inflammatory response induced by ADCs. Specifically, there was an increase in EOMES-positive NK cells, which exert potent antitumor effector functions (79). T-DM1 was found to increase the NK cell- and T cell-specific proinflammatory chemokines MIG/CXCL9, MIP-1 α /CCL3, MIP-1 β /CCL4, and RANTES, which could explain the increased NK and T cell numbers (80).

ADCs can also elicit long-lasting antitumor effects through the adaptive immune system via memory T cells and B cells. Immunologic memory plays a crucial role in the control of tumors and maintenance of a therapeutic response. Iwata et al. used syngeneic mouse models inoculated with CT26.WT-hHER2 cells to show that ADCs promote antigen spreading (76). This phenomenon occurs when treatment-induced T cells recognize not only the target antigen but other antigens of the tumor cell. In this study, mice were initially injected with CT26.WT-hHER2 cells and treated with T-DXd once they had a tumor (76). Then treated mice were rechallenged with both HER2-expressing tumors and non-HER2-expressing tumors and rejected both types. This result suggested that T-DXd stimulated immune cells that recognized non-HER2 tumor antigens. Furthermore, in *in vitro* studies, splenocytes of naive and T-DXd-treated mice were cocultured with both HER2-expressing and non-HER2-expressing tumor cells, and the splenocytes of T-DXd-treated mice reacted to both tumor cells with increased IFN- γ secretion, whereas the splenocytes of naive mice did not (76).

Given the immunomodulatory effects of ADCs, investigators are evaluating whether the combination of immune checkpoint inhibitors (ICIs) and ADCs can enhance T cell responses and overcome mechanisms of immune resistance. The immune inhibitory receptor cytotoxic T lymphocyte-associated antigen 4 (CTLA-4) was found to be markedly increased on T cells upon T-DM1 treatment. Further, the immune inhibitory ligand PD-L1 was markedly increased on TAMs upon T-DM1 treatment (80). These studies suggest that immune escape can be a potential mechanism of ADC resistance and provide a rationale for combination therapies. Preclinical mouse models have demonstrated that the upfront combination of T-DM1 and dual immune checkpoint blockade (anti-CTLA-4 with anti-PD-1) leads to nearly 100% cure of mice, while either of these therapies alone was much less effective (80). Likewise, T-DXd has also been found to directly increase both MHC class I and PD-L1 expression in mouse models (76). While PD-L1 expression decreases tumor immunity, the increase in MHC class I expression suggests that T-DXd also promotes T cell activation (81). The combination of T-DXd and PD-L1 blockade successfully increased survival of the mouse models compared with monotherapy alone (76). The role of this combination is being further explored in several clinical trials, including NCT03334617, NCT03742102, NCT04379596, NCT03523572, NCT02302339, NCT03288545, NCT02572167, NCT05489211, NCT05039073,

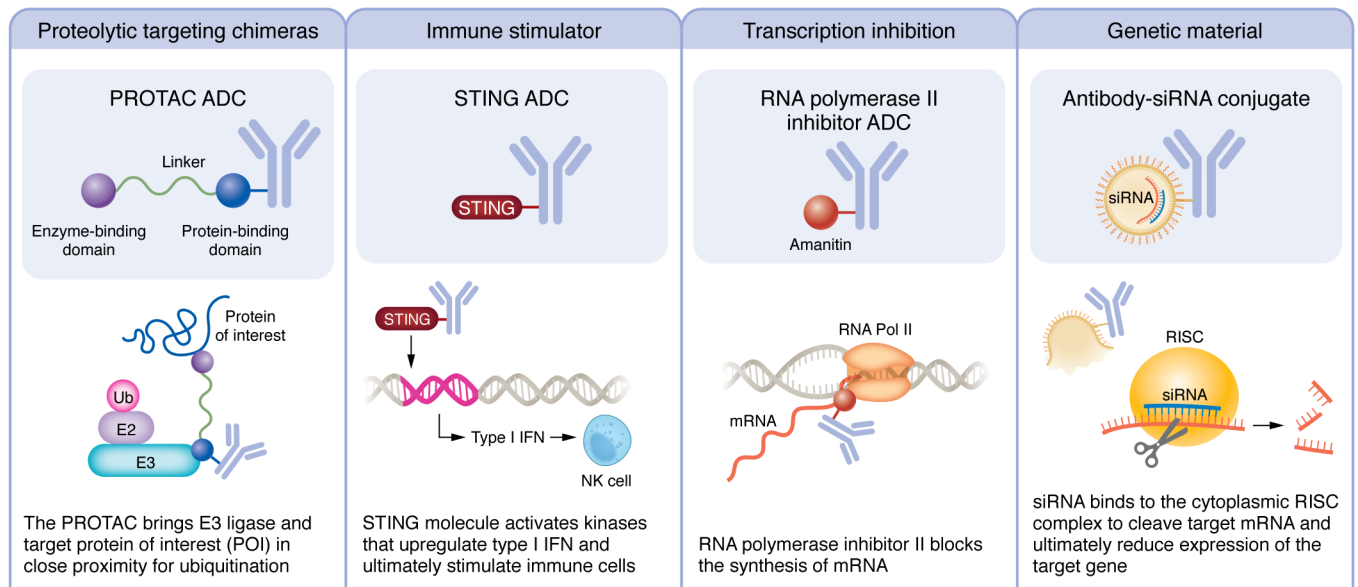


Figure 3. Payloads under investigation. The modular design of ADCs allows for payloads to be used interchangeably. Broad categories of payloads under investigation include proteolysis-targeting chimeras, immune stimulators, transcription inhibition, and genetic materials.

NCT04561206, NCT02758717, NCT03057795, NCT01703949, and NCT01896999.

Despite the strong preclinical rationale for ADC and ICI combination therapies, a major concern is the potential for overlapping toxicities. Specifically, T-DXd monotherapy is associated with around 15% incidence of pneumonitis (82), whereas ICI monotherapy shows a lower incidence 3% (83). In the KATE2 trial, the addition of atezolizumab to T-DM1 in TNBC patients resulted in more toxicity, with 33% of patients experiencing serious adverse events. While no clinical benefit was observed in the intention-to-treat population, exploratory analyses suggest a potential benefit in patients with PD-L1-positive TNBC, highlighting the importance of identifying the specific patient subset that may derive benefit from this combination (84). On the other hand, safety data from BEGONIA, which combined Dato-DXd and durvalumab in metastatic TNBC patients, noted no cases of pneumonitis (85). To achieve a balance between effectiveness and tolerability, combination ADC and ICI therapies need to optimize their payloads and dosing strategy, which may require sequential dosing or dose reductions.

Payloads under investigation

Modifications to the payload are another strategy to enhance antitumor effect and overcome resistance (Figure 3). A class of ADCs under the category of immune stimulator antibody conjugates (ISACs) are being developed to deliver targeted immune activators into tumors to increase effector immunity at the TME (86). NJH395 is an example of an ISAC composed of a TLR7 agonist conjugated to an HER2 antibody (87). A phase I clinical trial in patients with HER2-positive non-breast advanced malignancies has demonstrated intratumoral immune modulation with increased type II IFN- γ and subsequent CD8⁺ T cell infiltration in the TME; however, these findings did not result in a clinical response (87). Agonists of the cyclic GMP-AMP synthase (cGAS)/stimulator of interferon genes (STING) pathway are another payload target being evaluated

preclinically to promote antitumor immunity through activation of T cells and NK cells (88, 89). The STING pathway is activated when cytosolic dsDNA binds to cGAS to produce cyclic GAMP (cGAMP). Upon stimulation by cGAMP, the STING molecule activates kinases that upregulate the expression of type I IFN, ultimately stimulating immune cells such as DCs, T cells, and NK cells (90). The biggest limitation of STING agonists is the risk of inducing excess cytokine release; thus, the potential of concentrating the STING payload in tumors via an ADC is especially promising. Wu et al. developed a STING agonist, IMSA172, which is conjugated to a tumor-targeting antibody against epidermal growth factor receptor (EGFR) (88). Administration of this STING ADC in mouse melanoma tumor models suppressed tumor growth. Furthermore, when the STING ADC was combined with anti-PD-L1 antibody, tumor growth was completely suppressed, suggesting synergy between these two treatments (88). In evaluating the mechanism through which STING ADCs promote antitumor immunity, tumors and draining lymph nodes of treated and untreated mice were collected and analyzed via fluorescence-activated cell sorting to identify immune cell populations and activation markers. The study found that the STING ADC activated both CD4⁺ and CD8⁺ T cells and increased the percentage of CD8⁺ T cells in the tumors (88). While the total number of NK cells was not changed by the STING ADC, the percentage of activated CD69⁺ NK cells showed a marked increase after therapy, which likely contributed to the antitumor effects. This finding also speaks to the heterogeneity of NK cells within the TME, which has implications in immunotherapy design and clinical practice (56, 91–94).

Proteolysis-targeting chimeras (PROTACs) are compounds composed of an E3 ligase ligand, a small chemical linker, and a ligand against a protein of interest (POI) with the ability to direct polyubiquitination and proteasome-mediated degradation of the POI. To date, PROTACs have been tested in 19 phase I or II clinical trials, with multiple others in investigational new drug (IND)-

enabling studies (95). PROTACs maintain high therapeutic potential because they can distinctively target intracellular proteins that other small-molecular inhibitors are unable to reach.

In breast cancer, PROTACs have been used to target the receptors ER and HER2 (96). The PROTAC ARV-471, developed by Arvinas and Pfizer, is being evaluated in phase I/II trials in breast cancer as an oral ER degrader, and preclinical efforts to target HER2 have been effective in degrading HER2 to slow tumor growth (97). While promising, PROTACs are not tissue specific, and thus degradation of off-target proteins could be detrimental and thus dose-limiting. To optimize their therapeutic window, PROTACs could be conjugated to ADCs on or near the E3 ligase ligand of the PROTAC to improve specificity (98). As a proof-of-concept study, Maneiro et al. designed a trastuzumab-PROTAC conjugate to selectively target BRD4 for degradation in HER2-positive breast cancer cell lines. This study showed that the PROTAC-ADC specifically degraded BRD4 in HER2-positive cells, with no degradation observed in HER2-negative cells (99).

Another promising approach to ADC payload modification uses an RNA polymerase II inhibitor as the payload. RNA polymerase II inhibitors arrest the cellular transcription process and protein synthesis, leading to cell death. The benefit of these RNA polymerase inhibitors is that the cytotoxicity activity occurs regardless of the proliferation status of the cancer cell, unlike with microtubule- or DNA-targeting therapies (100). Thus, inhibiting RNA polymerase could be an attractive approach to target dormant cancer cells, which are in a G₀ quiescent state and do not undergo active proliferation (101). HDP-101 is an RNA polymerase II ADC targeting anti-B cell maturation antigen (anti-BCMA) with an amanitin derivative and has shown ability to block tumor growth in both proliferating and resting multiple myeloma BCMA-positive cells (102). This early study provides promise for future work to target and eliminate dormant breast cancer cells, whose presence has strong correlation with later recurrence (103–105).

Antibody-oligonucleotide conjugates have been described to deliver DNA or RNA silencing nucleotides like siRNA (106). The Baumer laboratory has coupled siRNAs to an antibody against EGFR to deliver siRNA and silence KRAS expression (107). However, challenges remain with conjugation of the oligonucleotide/nanoparticle due to size and charge of the nucleic acids (106). Future work will involve improving the process of conjugation and delivery into cells.

Finally, dual-drug-conjugated ADCs are being constructed to evaluate the simultaneous delivery of two payloads to overcome tumor heterogeneity and ADC resistance (108). Investigational in vitro studies have found that simultaneous delivery of the conjugated payloads has greater efficacy than single-drug ADCs in

resistant and heterogeneous HER2-expressing cell lines (108). It is hypothesized that the killing of cancer cells by the more potent payload helps the co-conjugated payload exert the bystander effect. Additionally, these dual-drug ADCs have greater antitumor effect than coadministration of single-drug ADCs. Dual-drug ADCs were found to accumulate in the tumor more effectively, likely because two single-drug ADCs would lead to binding competition and decreased internalization of the ADC (108). This payload class is likely to open a new avenue for ADCs with the benefit of further addressing tumor heterogeneity. At the time of this writing there is a rapidly expanding list of ADCs that are currently in the pipeline (Supplemental Table 1; supplemental material available online with this article; <https://doi.org/10.1172/JCI172156DS1>).

Conclusions and future directions

A better mechanistic understanding of how the TME responds to ADC treatment could lead to durable responses because of amplification of the immune system. The next era of ADCs will be focused on strategies to overcome resistance and enhance efficacy by pairing ADCs with signaling pathway inhibitors, ICIs, other TME modifiers, and emerging payloads. However, delivery of either monotherapies or combination therapies still lacks an effective means of patient selection. This challenge is particularly critical in the present era where certain ADCs, such as T-DXd and SG, surpass limitations of our traditional breast cancer subtypes. Thus, the development of biomarkers, such as CTCs, to determine the patient population likely to benefit from ADC treatment becomes imperative. To uncover such biomarkers, it is important to conduct studies using advanced analytic techniques of the entire microenvironment, such as single-cell and spatial “omics” and functional assays with tumor organoids and immune cells (109–114). Understanding how signaling networks change across cell types and how ADCs augment the function of effector immune cells or decrease regulatory immune cells could lead to new biomarker development and therapies.

Acknowledgments

We extend special thanks to all members of the Chan laboratory. This work was supported by the METAvivor Early Career Investigator Award, Peter Bradley Carlson Trust, Sarah G. Komen Career Catalyst Award (1010879), and 1K08CA270188-01A1 (NIH).

Address correspondence to: Isaac S. Chan, Department of Internal Medicine, Division of Hematology and Oncology, University of Texas Southwestern Medical Center, 5323 Harry Hines Boulevard, Dallas, Texas 75390-8845, USA. Phone: 214.645.7440; Email: isaac.chan@utsouthwestern.edu.

1. Tsuchikama K, An Z. Antibody-drug conjugates: recent advances in conjugation and linker chemistries. *Protein Cell*. 2016;9(1):33–46.
2. Modi S, et al. Trastuzumab deruxtecan in previously treated HER2-low advanced breast cancer. *N Engl J Med*. 2022;387(1):9–20.
3. Rugo HS, et al. Sacituzumab govitecan in hormone receptor-positive/human epidermal growth factor receptor 2-negative metastatic breast cancer. *J Clin Oncol*. 2022;40(29):3365–3376.
4. Dieras V, et al. Trastuzumab emtansine versus capecitabine plus lapatinib in patients with previously treated HER2-positive advanced breast cancer (EMILIA): a descriptive analysis of final overall survival results from a randomised, open-label, phase 3 trial. *Lancet Oncol*. 2017;18(6):732–742.
5. Verma S, et al. Trastuzumab emtansine for HER2-positive advanced breast cancer. *N Engl J Med*. 2012;367(19):1783–1791.
6. von Minckwitz G, et al. Trastuzumab emtansine for residual invasive HER2-positive breast cancer. *N Engl J Med*. 2018;380(7):617–628.
7. Modi S, et al. Trastuzumab deruxtecan in previously treated HER2-positive breast cancer. *N Engl J Med*. 2019;382(7):610–621.
8. Bardia A, et al. Sacituzumab govitecan in metastatic triple-negative breast cancer. *N Engl J Med*. 2021;384(16):1529–1541.
9. Andrikopoulou A, et al. Trastuzumab derux-

- tecan (DS-8201a): the latest research and advances in breast cancer. *Clin Breast Cancer*. 2021;21(3):e212–e219.
10. Shiose Y, et al. Relationship between drug release of DE-310, macromolecular prodrug of DX-8951f, and cathepsins activity in several tumors. *Biol Pharm Bull*. 2007;30(12):2365–2370.
 11. Ogitani Y, et al. DS-8201a, a novel HER2-targeting ADC with a novel DNA topoisomerase I inhibitor, demonstrates a promising antitumor efficacy with differentiation from T-DM1. *Clin Cancer Res*. 2016;22(20):5097–5108.
 12. Ferraro E, et al. Implementing antibody-drug conjugates (ADCs) in HER2-positive breast cancer: state of the art and future directions. *Breast Cancer Res*. 2021;23(1):84.
 13. Pondé N, et al. Antibody-drug conjugates in breast cancer: a comprehensive review. *Curr Treat Options Oncol*. 2019;20(5):37.
 14. Lu P, et al. Landmark trials in the medical oncology management of metastatic breast cancer. *Semin Oncol*. 2021;48(3):246–258.
 15. Hutchinson MH, et al. Process development and manufacturing of antibody-drug conjugates. In: Hutchinson MH, et al., eds. *Biopharmaceutical Processing*. Elsevier; 2018:813–836.
 16. Staudacher AH, Brown MP. Antibody drug conjugates and bystander killing: is antigen-dependent internalisation required? *Br J Cancer*. 2017;117(12):1736–1742.
 17. Sun X, et al. Effects of drug-antibody ratio on pharmacokinetics, biodistribution, efficacy, and tolerability of antibody-maytansinoid conjugates. *Bioconjug Chem*. 2017;28(5):1371–1381.
 18. Khongorzul P, et al. Antibody-drug conjugates: a comprehensive review. *Mol Cancer Res*. 2020;18(1):3–19.
 19. Marei HE, et al. Potential of antibody-drug conjugates (ADCs) for cancer therapy. *Cancer Cell Int*. 2022;22(1):255.
 20. Drago JZ, et al. Unlocking the potential of antibody-drug conjugates for cancer therapy. *Nat Rev Clin Oncol*. 2021;18(6):327–344.
 21. Garcia-Alonso S, et al. Resistance to antibody-drug conjugates. *Cancer Res*. 2018;78(9):2159–2165.
 22. Nguyen TD, et al. Mechanisms of ADC toxicity and strategies to increase ADC tolerability. *Cancers (Basel)*. 2023;15(3):713.
 23. Mahalingaiah PK, et al. Potential mechanisms of target-independent uptake and toxicity of antibody-drug conjugates. *Pharmacol Ther*. 2019;200:110–125.
 24. Bordeaux BM, et al. Transient competitive inhibition bypasses the binding site barrier to improve tumor penetration of trastuzumab and enhance T-DM1 efficacy. *Cancer Res*. 2021;81(15):4145–4154.
 25. Parakh S, et al. Antibody drug conjugates in glioblastoma — is there a future for them? *Front Oncol*. 2021;11:718590.
 26. Beaumont K, et al. ADME and DMPK considerations for the discovery and development of antibody drug conjugates (ADCs). *Xenobiotica*. 2022;52(8):770–785.
 27. Loganzo F, et al. Mechanisms of resistance to antibody-drug conjugates. *Mol Cancer Ther*. 2016;15(12):2825–2834.
 28. Loganzo F, et al. Tumor cells chronically treated with a trastuzumab-maytansinoid antibody-drug conjugate develop varied resistance mechanisms but respond to alternate treatments. *Mol Cancer Ther*. 2015;14(4):952–963.
 29. Aslan M, et al. Oncogene-mediated metabolic gene signature predicts breast cancer outcome. *NPJ Breast Cancer*. 2021;7(1):141.
 30. Coates JT, et al. Parallel genomic alterations of antigen and payload targets mediate polyclonal acquired clinical resistance to sacituzumab govitecan in triple-negative breast cancer. *Cancer Discov*. 2021;11(10):2436–2445.
 31. Scaltriti M, et al. Expression of p95HER2, a truncated form of the HER2 receptor, and response to anti-HER2 therapies in breast cancer. *J Natl Cancer Inst*. 2007;99(8):628–638.
 32. Sung M, et al. Caveolae-mediated endocytosis as a novel mechanism of resistance to trastuzumab emtansine (T-DM1). *Mol Cancer Ther*. 2018;17(1):243–253.
 33. Austin CD, et al. Endocytosis and sorting of ErbB2 and the site of action of cancer therapeutics trastuzumab and geldanamycin. *Mol Biol Cell*. 2004;15(12):5268–5282.
 34. Rios-Luci C, et al. Resistance to the antibody-drug conjugate T-DM1 is based in a reduction in lysosomal proteolytic activity. *Cancer Res*. 2017;77(17):4639–4651.
 35. Kast F, et al. Engineering an anti-HER2 biparatopic antibody with a multimodal mechanism of action. *Nat Commun*. 2021;12(1):3790.
 36. Li JY, et al. A biparatopic HER2-targeting antibody-drug conjugate induces tumor regression in primary models refractory to or ineligible for HER2-targeted therapy. *Cancer Cell*. 2019;35(6):948–949.
 37. Spangler JB, et al. Combination antibody treatment down-regulates epidermal growth factor receptor by inhibiting endosomal recycling. *Proc Natl Acad Sci U S A*. 2010;107(30):13252–13257.
 38. Pegram MD, et al. First-in-human, phase 1 dose-escalation study of biparatopic anti-HER2 antibody-drug conjugate MEDI4276 in patients with HER2-positive advanced breast or gastric cancer. *Mol Cancer Ther*. 2021;20(8):1442–1453.
 39. Nedeljkovic M, Damjanovic A. Mechanisms of chemotherapy resistance in triple-negative breast cancer—how we can rise to the challenge. *Cells*. 2019;8(9):957.
 40. Chen R, et al. Inhibition of MDR1 overcomes resistance to brentuximab vedotin in Hodgkin lymphoma. *Clin Cancer Res*. 2020;26(5):1034–1044.
 41. Cabaud O, et al. Overcoming resistance to anti-nectin-4 antibody-drug conjugate. *Mol Cancer Ther*. 2022;21(7):1227–1235.
 42. Moquist PN, et al. Novel auristatins with high bystander and cytotoxic activities in drug efflux-positive tumor models. *Mol Cancer Ther*. 2021;20(2):320–328.
 43. Rosen DB, et al. AKT signaling as a novel factor associated with in vitro resistance of human AML to gemtuzumab ozogamicin. *PLoS One*. 2013;8(1):e53518.
 44. Li G, et al. Mechanisms of acquired resistance to trastuzumab emtansine in breast cancer cells. *Mol Cancer Ther*. 2018;17(7):1441–1453.
 45. Saatci O, et al. Targeting PLK1 overcomes T-DM1 resistance via CDK1-dependent phosphorylation and inactivation of Bcl-2/xL in HER2-positive breast cancer. *Oncogene*. 2018;37(17):2251–2269.
 46. Wang L, et al. STAT3 activation confers trastuzumab-emtansine (T-DM1) resistance in HER2-positive breast cancer. *Cancer Sci*. 2018;109(10):3305–3315.
 47. Yap TA, et al. Phase Ib SEASTAR study: combining rucaparib and sacituzumab govitecan in patients with cancer with or without mutations in homologous recombination repair genes. *JCO Precis Oncol*. 2022;6:e2100456.
 48. Rasheed ZA, Rubin EH. Mechanisms of resistance to topoisomerase I-targeting drugs. *Oncogene*. 2003;22(47):7296–7304.
 49. Harris J. FDA Green Lights Companion Diagnostic for Trastuzumab Deruxtecan in Metastatic HER2-Low Breast Cancer. <https://www.onclive.com/view/fda-green-lights-companion-diagnostic-for-trastuzumab-deruxtecan-in-metastatic-her2-low-breast-cancer>. Updated October 4, 2022. Accessed July 27, 2023.
 50. Tolcher AW. Antibody drug conjugates: the dos and don'ts in clinical development. *Pharmacol Ther*. 2022;240:108235.
 51. Pusztai L, et al. Estrogen and HER-2 receptor discordance between primary breast cancer and metastasis. *Oncologist*. 2010;15(11):1164–1168.
 52. Coats S, et al. Antibody-drug conjugates: future directions in clinical and translational strategies to improve the therapeutic index. *Clin Cancer Res*. 2019;25(18):5441–5448.
 53. Williams M, et al. Patient selection strategies to maximize therapeutic index of antibody-drug conjugates: prior approaches and future directions. *Mol Cancer Ther*. 2020;19(9):1770–1783.
 54. Thyparambil SP, et al. Expression of antibody-drug conjugates (ADC) biomarkers in colorectal cancer. *J Clin Oncol*. 2020;38(4 suppl):17.
 55. Thyparambil SP, et al. Proteomic profiling of antibody-drug conjugate (ADC) biomarkers in pancreatic cancer. *J Clin Oncol*. 2023;41(4 suppl):671.
 56. Xu L, et al. A comprehensive single-cell breast tumor atlas defines cancer epithelial and immune cell heterogeneity and interactions predicting anti-PD-1 therapy response [preprint]. <https://doi.org/10.1101/2022.08.01.501918>. Posted on bioRxiv August 9, 2022.
 57. Carmon KS, Azhdarinia A. Application of immuno-PET in antibody-drug conjugate development. *Mol Imaging*. 2018;17:1536012118801223.
 58. Gebhart G, et al. Molecular imaging as a tool to investigate heterogeneity of advanced HER2-positive breast cancer and to predict patient outcome under trastuzumab emtansine (T-DM1): the ZEPHIR trial. *Ann Oncol*. 2016;27(4):619–624.
 59. Danila DC, et al. Predictive biomarkers of tumor sensitivity to STEAP1 antibody-drug conjugate (ADC) in patients (pts) with metastatic castration-resistant prostate cancer (mCRPC). *Cancer Res*. 2015;75(15 suppl):4310.
 60. Danila DC, et al. Phase I study of DSTP3086S, an antibody-drug conjugate targeting six-transmembrane epithelial antigen of prostate 1, in metastatic castration-resistant prostate cancer. *J Clin Oncol*. 2019;37(36):3518–3527.
 61. Sant M, et al. Role of ctDNA in breast cancer.

- Cancers (Basel)*. 2022;14(2):310.
62. Yagisawa M, et al. A basket trial of trastuzumab deruxtecan, a HER2-targeted antibody-drug conjugate, for HER2-amplified solid tumors identified by circulating tumor DNA analysis (HERALD trial). *J Clin Oncol*. 2020; 38(15 suppl):TPS3650.
 63. Chen DS, Mellman I. Oncology meets immunology: the cancer-immunity cycle. *Immunity*. 2013;39(1):1-10.
 64. Collins DM, et al. Trastuzumab induces antibody-dependent cell-mediated cytotoxicity (ADCC) in HER-2-non-amplified breast cancer cell lines. *Ann Oncol*. 2012;23(7):1788-1795.
 65. Vivier E, et al. Natural killer cell signaling pathways. *Science*. 2004;306(5701):1517-1519.
 66. Junttila TT, et al. Trastuzumab-DM1 (T-DM1) retains all the mechanisms of action of trastuzumab and efficiently inhibits growth of lapatinib insensitive breast cancer. *Breast Cancer Res Treat*. 2011;128(2):347-356.
 67. Oflazoglu E, et al. Macrophages contribute to the antitumor activity of the anti-CD30 antibody SGN-30. *Blood*. 2007;110(13):4370-4372.
 68. Kurdi AT, et al. Antibody-dependent cellular phagocytosis by macrophages is a novel mechanism of action of elotuzumab. *Mol Cancer Ther*. 2018;17(7):1454-1463.
 69. Anderson S, et al. SGN-ALPV a novel, investigational vedotin ADC demonstrates highly effective targeting of oncofetal phosphatases ALPP and ALPPL2 in preclinical models. *Cancer Res*. 2022;82(12 suppl):1766.
 70. Borrok MJ, et al. An "Fc-Silenced" IgG1 format with extended half-life designed for improved stability. *J Pharm Sci*. 2017;106(4):1008-1017.
 71. Ko S, et al. An Fc variant with two mutations confers prolonged serum half-life and enhanced effector functions on IgG antibodies. *Exp Mol Med*. 2022;54(11):1850-1861.
 72. Cools N, et al. Immunosuppression induced by immature dendritic cells is mediated by TGF-beta/IL-10 double-positive CD4+ regulatory T cells. *J Cell Mol Med*. 2008;12(2):690-700.
 73. Kim R, et al. Functional roles of immature dendritic cells in impaired immunity of solid tumour and their targeted strategies for provoking tumour immunity. *Clin Exp Immunol*. 2006;146(2):189-196.
 74. Ghiringhelli F, et al. Tumor cells convert immature myeloid dendritic cells into TGF-beta-secreting cells inducing CD4+CD25+ regulatory T cell proliferation. *J Exp Med*. 2005;202(7):919-929.
 75. Muller P, et al. Microtubule-depolymerizing agents used in antibody-drug conjugates induce antitumor immunity by stimulation of dendritic cells. *Cancer Immunol Res*. 2014;2(8):741-755.
 76. Iwata TN, et al. A HER2-targeting antibody-drug conjugate, trastuzumab deruxtecan (DS-8201a), enhances antitumor immunity in a mouse model. *Mol Cancer Ther*. 2018;17(7):1494-1503.
 77. Martin K, et al. The microtubule-depolymerizing agent ansamitocin P3 programs dendritic cells toward enhanced anti-tumor immunity. *Cancer Immunol Immunother*. 2014;63(9):925-938.
 78. Luen SJ, et al. Tumour-infiltrating lymphocytes and the emerging role of immunotherapy in breast cancer. *Pathology*. 2017;49(2):141-155.
 79. Zhang J, et al. T-bet and Eomes govern differentiation and function of mouse and human NK cells and ILC1. *Eur J Immunol*. 2018;48(5):738-750.
 80. Muller P, et al. Trastuzumab emtansine (T-DM1) renders HER2+ breast cancer highly susceptible to CTLA-4/PD-1 blockade. *Sci Transl Med*. 2015;7(315):315ra188.
 81. Alberts B, et al., eds. *Molecular Biology of the Cell*. 4th ed. Garland Science; 2002.
 82. Powell CA, et al. Pooled analysis of drug-related interstitial lung disease and/or pneumonitis in nine trastuzumab deruxtecan monotherapy studies. *ESMO Open*. 2020;5(4):100554.
 83. Naidoo J, et al. Pneumonitis in patients treated with anti-programmed death-1/programmed death ligand 1 therapy. *J Clin Oncol*. 2017;35(7):709-717.
 84. Emens LA, et al. Trastuzumab emtansine plus atezolizumab versus trastuzumab emtansine plus placebo in previously treated, HER2-positive advanced breast cancer (KATE2): a phase 2, multicentre, randomised, double-blind trial. *Lancet Oncol*. 2020;21(10):1283-1295.
 85. Schmid P, et al. 166MO DatoPotamab deruxtecan (Dato-DXd) + durvalumab (D) as first-line (1L) treatment for unresectable locally advanced/metastatic triple-negative breast cancer (a/mTNBC): initial results from BEGONIA, a phase Ib/II study. *Ann Oncol*. 2022;33:S199.
 86. Ackerman SE, et al. Immune-stimulating antibody conjugates elicit robust myeloid activation and durable antitumor immunity. *Nat Cancer*. 2021;2(1):18-33.
 87. Janku F, et al. Preclinical characterization and phase I study of an anti-HER2-TLR7 immune-stimulator antibody conjugate in patients with HER2+ malignancies. *Cancer Immunol Res*. 2022;10(12):1441-1461.
 88. Wu YT, et al. Tumor-targeted delivery of a STING agonist improves cancer immunotherapy. *Proc Natl Acad Sci U S A*. 2022;119(49):e2214278119.
 89. Nicolai CJ, et al. NK cells mediate clearance of CD8+ T cell-resistant tumors in response to STING agonists. *Sci Immunol*. 2020;5(45):eaa2738.
 90. Barber GN. STING: infection, inflammation and cancer. *Nat Rev Immunol*. 2015;15(12):760-770.
 91. Chan IS, Ewald AJ. The changing role of natural killer cells in cancer metastasis. *J Clin Invest*. 2022;132(6):e143762.
 92. Chan IS, et al. Cancer cells educate natural killer cells to a metastasis-promoting cell state. *J Cell Biol*. 2020;219(9):e202001134.
 93. de Andrade LF, et al. Discovery of specialized NK cell populations infiltrating human melanoma metastases. *JCI Insight*. 2019;4(23):e133103.
 94. Moreno-Nieves UY, et al. Landscape of innate lymphoid cells in human head and neck cancer reveals divergent NK cell states in the tumor microenvironment. *Proc Natl Acad Sci U S A*. 2021;118(28):e2101169118.
 95. Li J, et al. Targeted protein degradation in cancers: orthodox PROTACs and beyond. *Innovation (Camb)*. 2023;4(3):100413.
 96. Tecalco-Cruz AC, et al. Proteolysis-targeting chimeras and their implications in breast cancer. *Explor Target Antitumor Ther*. 2021;2(6):496-510.
 97. Hu M, et al. Discovery of potent and selective HER2 PROTAC degrader based Tucatinib with improved efficacy against HER2 positive cancers. *Eur J Med Chem*. 2022;244:114775.
 98. Ocaña A, Pandiella A. Proteolysis targeting chimeras (PROTACs) in cancer therapy. *J Exp Clin Cancer Res*. 2020;39(1):189.
 99. Maneiro MA, et al. Antibody-PROTAC conjugates enable HER2-dependent targeted protein degradation of BRD4. *ACS Chem Biol*. 2020;15(6):1306-1312.
 100. Pallis M, et al. Efficacy of RNA polymerase II inhibitors in targeting dormant leukaemia cells. *BMC Pharmacol Toxicol*. 2013;14:32.
 101. Aguirre-Ghisou JA. How dormant cancer persists and reawakens. *Science*. 2018;361(6409):1314-1315.
 102. Figueroa-Vazquez V, et al. HDP-101, an anti-BCMA antibody-drug conjugate, safely delivers amanitin to induce cell death in proliferating and resting multiple myeloma cells. *Mol Cancer Ther*. 2021;20(2):367-378.
 103. Pan H, et al. 20-year risks of breast-cancer recurrence after stopping endocrine therapy at 5 years. *N Engl J Med*. 2017;377(19):1836-1846.
 104. Fluegen G, et al. Phenotypic heterogeneity of disseminated tumour cells is preset by primary tumour hypoxic microenvironments. *Nat Cell Biol*. 2017;19(2):120-132.
 105. Braun S, et al. A pooled analysis of bone marrow micrometastasis in breast cancer. *N Engl J Med*. 2005;353(8):793-802.
 106. Dugal-Tessier J, et al. Antibody-oligonucleotide conjugates: a twist to antibody-drug conjugates. *J Clin Med*. 2021;10(4):838.
 107. Baumer S, et al. Antibody-mediated delivery of anti-KRAS-siRNA in vivo overcomes therapy resistance in colon cancer. *Clin Cancer Res*. 2015;21(6):1383-1394.
 108. Yamazaki CM, et al. Antibody-drug conjugates with dual payloads for combating breast tumor heterogeneity and drug resistance. *Nat Commun*. 2021;12(1):3528.
 109. Xu L, et al. A comprehensive single-cell breast tumor atlas defines cancer epithelial and immune cell heterogeneity and interactions predicting anti-PD-1 therapy response [preprint]. <https://doi.org/10.1101/2022.08.01.501918>. Posted on bioRxiv August 9, 2022.
 110. Cornelius SL, et al. Generating and imaging mouse and human epithelial organoids from normal and tumor mammary tissue without passaging. *J Vis Exp*. 2022;(189):10.3791/64626.
 111. Azizi E, et al. Single-cell map of diverse immune phenotypes in the breast tumor microenvironment. *Cell*. 2018;174(5):1293-1308.
 112. Kumar T, et al. A spatially resolved single-cell genomic atlas of the adult human breast. *Nature*. 2023;620:181-191.
 113. Chan IS, Ewald AJ. Organoid co-culture methods to capture cancer cell-natural killer cell interactions. *Methods Mol Biol*. 2022;2463:235-250.
 114. LeSavage BL, et al. Next-generation cancer organoids. *Nat Mater*. 2022;21(2):143-159.